



## Road Safety and Socio-Economic Assessment of National Highways in Punjab



### Road Safety Assessment of Existing Black Spots on NH-44 (Old NH-1)

From Shambhu Border (Km 212.20  
to Jalandhar (Km 387.10)



**August 2021**



## CONTENTS

<b>1. Background – Safe National Highway Programme (SNHP)</b> .....	1
1.1. About IDC and Its Approach .....	1
<b>2. Introduction of the Project</b> .....	2
<b>3. Police Station wise Road Accident Scenario on NH-44 (Punjab)</b> .....	4
<b>4. Summary of Road Accidents and Fatalities of Existing Black Spots on NH-44 (Old NH-01)</b> .....	8
4.1. Fair Farm Resort Black Spot (UID: PB-(02)-120) .....	13
Location Details .....	13
4.2. Verka Milk Plant under Bridge Black SPOT (UID: PB-(02)-121) .....	14
Location Details .....	14
4.3. Y-Point Bhagat Singh Colony Black Spot (UID: PB-(02)-122).....	15
Location Details .....	15
4.4. T-Point Jinda Road Black Spot (UID: PB-(02)-123) .....	16
Location Details .....	16
4.5. Butta Singh Building Material Store Black Spot (UID: PB-(02)-124).....	17
Location Details .....	17
4.6. Pathankot Chowk Black Spot (UID: PB-(02)-125).....	18
Location Details .....	18
4.7. Lambha Pind Chowk Black Spot (UID: PB-(02)-126) .....	19
Location Details .....	19
4.8. T-Point Suchi Pind Black Spot (UID: PB-(02)-127).....	20
Location Details .....	20
4.9. Reru Black Spot (UID: PB-(02)-128) .....	21
Location Details .....	21
4.10. T-Point Hill View Colony Kalia Colony Black Spot (UID: PB-(02)-129) .....	22
Location Details .....	22
4.11. Opposite JC Resort Black Spot (UID: PB-(02)-130).....	23
Location Details .....	23
4.12. Dhanowali Road Black Spot (UID: PB-(02)-131).....	24
Location Details .....	24
4.13. Rama Mandi Chowk Black Spot (UID: PB-(02)-132).....	25
Location Details .....	25
4.14. Birring Gate, Dakoha Fatak Black Spot (UID: PB-(02)-133) .....	26

Location Details .....	26
4.15. Bapraur-Sambu, Surya World College Black Spot (UID: PB-(02)-134).....	27
Location Details .....	27
4.16. Ghaggar Sarai, Shambhu to Rajpura Black Spot (UID: PB-(02)-135) .....	28
Location Details .....	28
4.17. Near Sarai Mughal, Shambu Black Spot (UID: PB-(02)-136) .....	29
Location Details .....	29
4.18. Rajpura-Ambala Highway Black Spot (UID: PB-(02)-137).....	30
Location Details .....	30
4.19. Eagle Motel, Rajpura-Ambala Road Black Spot (UID: PB-(02)-138) .....	31
Location Details .....	31
4.20. Near Nogaja Peer, Pilakhni, Rajpura Black Spot (UID: PB-(02)-139) .....	32
Location Details .....	32
4.21. Near Shambu Barrier, Ambala-Rajpura Black Spot (UID: PB-(02)-140).....	33
Location Details .....	33
4.22. Eastman Caste & Forge LTD. Black Spot (UID: PB-(02)-141).....	34
Location Details .....	34
4.23. Goyal Jeep Showroom Black Spot (UID: PB-(02)-142) .....	35
Location Details .....	35
4.24. Giaspura Flyover Black Spot (UID: PB-(02)-143) .....	36
Location Details .....	36
4.25. Red Mango Restaurant Black Spot (UID: PB-(02)-144) .....	37
Location Details .....	37
4.26. Gur. Baba Bagga Singh, Basti Jodhewal Black Spot (UID: PB-(02)-145) .....	38
Location Details .....	38
4.27. Dhandari Kalan Bus / Railway Station Black Spot (UID: PB-(02)-146) .....	39
Location Details .....	39
4.28. HP Petrol Station, Industrial Area-A Black Spot (UID: PB-(02)-147).....	40
Location Details .....	40
4.29. Oswal Woollen Mills Black Spot (UID: PB-(02)-148) .....	41
Location Details .....	41
4.30. Hanuman Mandir, Sherpur Chowk Black Spot (UID: PB-(02)-149) .....	42
Location Details .....	42
4.31. Karbara Chowk Black Spot (UID: PB-(02)-150).....	43

Location Details .....	43
4.32. Transport Nagar Black Spot (UID: PB-(02)-151).....	44
Location Details .....	44
4.33. Dhandari Flyover Black Spot (UID: PB-(02)-152).....	45
Location Details .....	45
4.34. Swani Motors Black Spot (UID: PB-(02)-153).....	46
Location Details .....	46
4.35. Sahnewal Bridge Black Spot (UID: PB-(02)-154) .....	47
Location Details .....	47
4.36. Greenland School Black Spot (UID: PB-(02)-155).....	48
Location Details .....	48
4.37. Bhogal Cycles, Dhandari Kalan Black Spot (UID: PB-(02)-156).....	49
Location Details .....	49
4.38. SEL Textiles Black Spot (UID: PB-(02)-157) .....	50
Location Details .....	50
4.39. Mohandai Oswal Hospital Black Spot (UID: PB-(02)-158).....	51
Location Details .....	51
4.40. Metro Mart, Mitran da Dhaba Bhattian Black Spot (UID: PB-(02)-159).....	52
Location Details .....	52
4.41. GMT School, Jalandhar Bypass Black Spot (UID: PB-(02)-160) .....	53
Location Details .....	53
4.42. Shivpuri Chowk Black Spot (UID: PB-(02)-161) .....	54
Location Details .....	54
4.43. Gurudwara Reru Sahib, Sahnewal Black Spot (UID: PB-(02)-162).....	55
Location Details .....	55
4.44. Tibba Cut, near Tajpur Chowk Black Spot (UID: PB-(02)-163).....	56
Location Details .....	56
4.45. Laddowal Chowk Black Spot (UID: PB-(02)-164).....	57
Location Details .....	57
4.46. Kaddian T-Point Black Spot (UID: PB-(02)-165).....	58
Location Details .....	58
4.47. Hardy's World Black Spot (UID: PB-(02)-166) .....	59
Location Details .....	59
4.48. Sherpur Chowk Black Spot (UID: PB-(02)-167) .....	60

Location Details .....	60
4.49. Zimidarán da Dhaba Black Spot (UID: PB-(02)-168).....	61
Location Details .....	61
4.50. Jassian Cut, T-Point Black Spot (UID: PB-(02)-169).....	62
Location Details .....	62
4.51. UCO Bank, Jugiana Black Spot (UID: PB-(02)-170).....	63
Location Details .....	63
4.52. Goyal Hyundai, Kanganwal Black Spot (UID: PB-(02)-171) .....	64
Location Details .....	64
4.53. Kailash Nagar Chowk Black Spot (UID: PB-(02)-172).....	65
Location Details .....	65
4.54. Basti Jodhewal Chowk Black Spot (UID: PB-(02)-173) .....	66
Location Details .....	66
4.55. Sahnewal Khurad Black Spot (UID: PB-(02)-174).....	67
Location Details .....	67

## List of Tables

Table 1 : Police Station Wise Road Accident Details for NH-44 .....	5
Table 2: Summary of Black Spots in Punjab.....	8
Table 3: Year wise distribution of Road Accidents and Fatalities .....	13
Table 4: Year wise distribution of Road Accidents and Fatalities .....	14
Table 5: Year wise distribution of Road Accidents and Fatalities .....	15
Table 6: Year wise distribution of Road Accidents and Fatalities .....	16
Table 7 ; Year wise distribution of Road Accidents and Fatalities.....	17
Table 8: Year wise distribution of Road Accidents and Fatalities .....	18
Table 9: Year wise distribution of Road Accidents and Fatalities .....	19
Table 10: Year wise distribution of Road Accidents and Fatalities .....	20
Table 11: Year wise distribution of Road Accidents and Fatalities .....	21
Table 12: Year wise distribution of Road Accidents and Fatalities .....	22
Table 13: Year wise distribution of Road Accidents and Fatalities .....	23
Table 14: Year wise distribution of Road Accidents and Fatalities .....	24
Table 15: Year wise distribution of Road Accidents and Fatalities .....	25
Table 16: Year wise distribution of Road Accidents and Fatalities .....	26
Table 17: Year wise distribution of Road Accidents and Fatalities .....	27
Table 18: Year wise distribution of Road Accidents and Fatalities .....	28
Table 19: Year wise distribution of Road Accidents and Fatalities .....	29
Table 20: Year wise distribution of Road Accidents and Fatalities .....	30
Table 21: Year wise distribution of Road Accidents and Fatalities .....	31

Table 22: Year wise distribution of Road Accidents and Fatalities .....	32
Table 23: Year wise distribution of Road Accidents and Fatalities .....	33
Table 24: Year wise distribution of Road Accidents and Fatalities .....	34
Table 25: Year wise distribution of Road Accidents and Fatalities .....	35
Table 26: Year wise distribution of Road Accidents and Fatalities .....	36
Table 27: Year wise distribution of Road Accidents and Fatalities .....	37
Table 28; Year wise distribution of Road Accidents and Fatalities .....	38
Table 29: Year wise distribution of Road Accidents and Fatalities .....	39
Table 30: Year wise distribution of Road Accidents and Fatalities .....	40
Table 31: Year wise distribution of Road Accidents and Fatalities .....	41
Table 32: Year wise distribution of Road Accidents and Fatalities .....	42
Table 33 : Year wise distribution of Road Accidents and Fatalities.....	43
Table 34:Year wise distribution of Road Accidents and Fatalities .....	44
Table 35: Year wise distribution of Road Accidents and Fatalities .....	45
Table 36: Year wise distribution of Road Accidents and Fatalities .....	46
Table 37: Year wise distribution of Road Accidents and Fatalities .....	47
Table 38:Year wise distribution of Road Accidents and Fatalities .....	48
Table 39: Year wise distribution of Road Accidents and Fatalities .....	49
Table 40:Year wise distribution of Road Accidents and Fatalities .....	50
Table 41:Year wise distribution of Road Accidents and Fatalities .....	51
Table 42: Year wise distribution of Road Accidents and Fatalities .....	52
Table 43: Year wise distribution of Road Accidents and Fatalities .....	53
Table 44: Year wise distribution of Road Accidents and Fatalities .....	54
Table 45: Year wise distribution of Road Accidents and Fatalities .....	55
Table 46: Year wise distribution of Road Accidents and Fatalities .....	56
Table 47: Year wise distribution of Road Accidents and Fatalities .....	57
Table 48: Year wise distribution of Road Accidents and Fatalities .....	58
Table 49: Year wise distribution of Road Accidents and Fatalities .....	59
Table 50: Year wise distribution of Road Accidents and Fatalities .....	60
Table 51: Year wise distribution of Road Accidents and Fatalities .....	61
Table 52: Year wise distribution of Road Accidents and Fatalities .....	62
Table 53: Year wise distribution of Road Accidents and Fatalities .....	63
Table 54: Year wise distribution of Road Accidents and Fatalities .....	64
Table 55: Year wise distribution of Road Accidents and Fatalities .....	65
Table 56: Year wise distribution of Road Accidents and Fatalities .....	66
Table 57: Year wise distribution of Road Accidents and Fatalities .....	67

## List of Figures

Figure 1 : Index Map of NH-44 in Punjab.....	2
Figure 2 : Locations of Various Identified Black Spots on NH-44 (2016-2018) .....	3
Figure 3: Police Station Wise Death Rate per Km per Year.....	7
Figure 4: Change in Number of Road Accident Fatalities in the Year 2019 W.R.T. Year 2018.....	12







## 1. BACKGROUND – SAFE NATIONAL HIGHWAY PROGRAMME (SNHP)

“Safe National Highway Programme” shall strive to have a comprehensive review of road safety scenario in the country from a spatial economic, social and environmental perspective. It will also take into account the road map followed in implementation of the highway projects and its outcomes. The present effort has been conceived as a research, dissemination and training programme to address the issues relating to: **a)** reduction in risk factor and to make travel on highways user friendly; **b)** capture social, environmental and economic impact; **c)** capacity building of users, enforcement functionaries and population living in the vicinity of highways (5 kms).

The programme “Road Safety and Socio-Economic Impact Assessment (SNHP)” mainly consists of three parts: micro scoping and macro scoping scale of study and using corridor approach. The research suggests that for an optimal and effective demonstration of road safety, the initial focus should be targeted on high-crash density demonstration corridors and urban areas identified using corridor approach.

First Part of SNHP consists of three projects. These projects will cover all the toll roads National Highways under the National Highways Authority of India (NHAI) as on 31st January 2021, in a phased manner. Initial duration of the programme is two years. The programme consists of following three projects.

Project 1: Road Safety Assessment of National Highways in Punjab (Toll Roads)

Project 2: Socio-Economic Impact Assessment of National Highway – 44.

Project 3: Awareness and Capacity Building of Road users and Stakeholders of National Highways (Toll Roads)

This programme is in a continuation of the tripartite MoU between the National Highways Authority of India (NHAI), Institute for Development and Communication, Chandigarh and Institute of Road Traffic Education (IRTE), Faridabad executed on 13th January 2021, as approved by the NHAI Board. IDC entered into a separate agreement with NHAI on 27<sup>th</sup> April 2021, for the first programme consisting above three projects.

### 1.1. ABOUT IDC AND ITS APPROACH

The Institute for Development and Communication (IDC) is an autonomous, non-profit research organization located in north-west India based at Chandigarh (UT). The core areas for research explorations have evolved in consonance with area specific challenges and specialisation of research leadership. The first concern continues to be re-examination of the theoretical underpinning of varied empirical explanations for knowledge synthesis and the second relates to its transfer for interventions. The Institute for Development and Communication has evolved from the specialisations of its founding members. They were growing social scientist, engineers and



planners committed to generating knowledge to harness the potential of their region and address the special needs of the society of their origins. Rooted in the social milieu, the organisation could establish forward and backward linkages to knowledge generation, stakeholder support and policymakers in the North-Western India particularly state of Punjab.

IDC has built partnerships that have provided support and sustenance across projects, research areas and overtime. The focus continues to be to construct knowledge from below. Issues raised at the grassroots level are empirically verified and shared across stakeholders to consolidate in policy initiatives. This has been possible with panning organisation of resources and research capacities to include a Governing body reflecting leadership across academic, policy planning, civil society and cultural traditions.

## 2. INTRODUCTION OF THE PROJECT

In the year 2008, The Government of India (GOI) through the National Highways Authority of India (NHAI) has decided to undertake Six Laning of Panipat- Jalandhar Section of NH-22 (Old-44) the State of Haryana and Punjab on BOT basis. The last 175 km of this project falls within the State of Punjab starting from Km 212.2 up to Km 387.1. Figure 1 shows the index map of NH-44 within the state of Punjab.

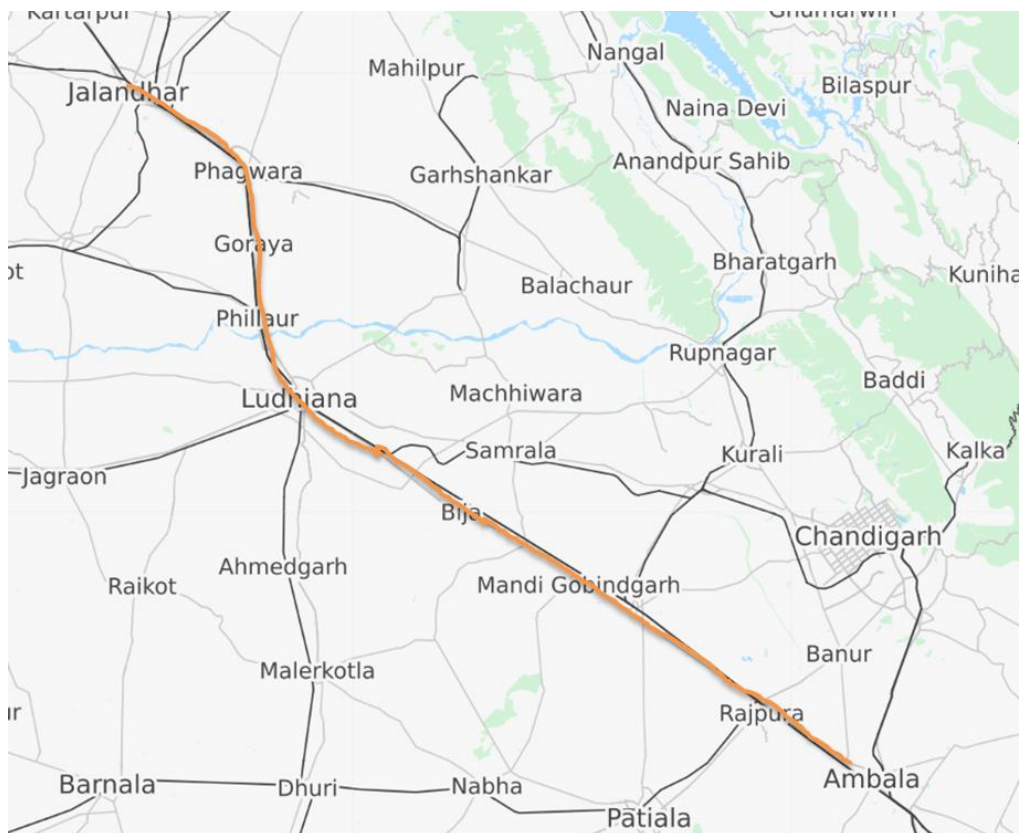


Figure 1 : Index Map of NH-44 in Punjab

Further, a detailed road accident analysis, a total of 55 accidental black spots which were identified on the 175 km long stretch of NH-44 (Figure 2), approved by Ministry of Road Transport & Highways (MoRTH), Government of India, for the session of 2016-2019 were performed.

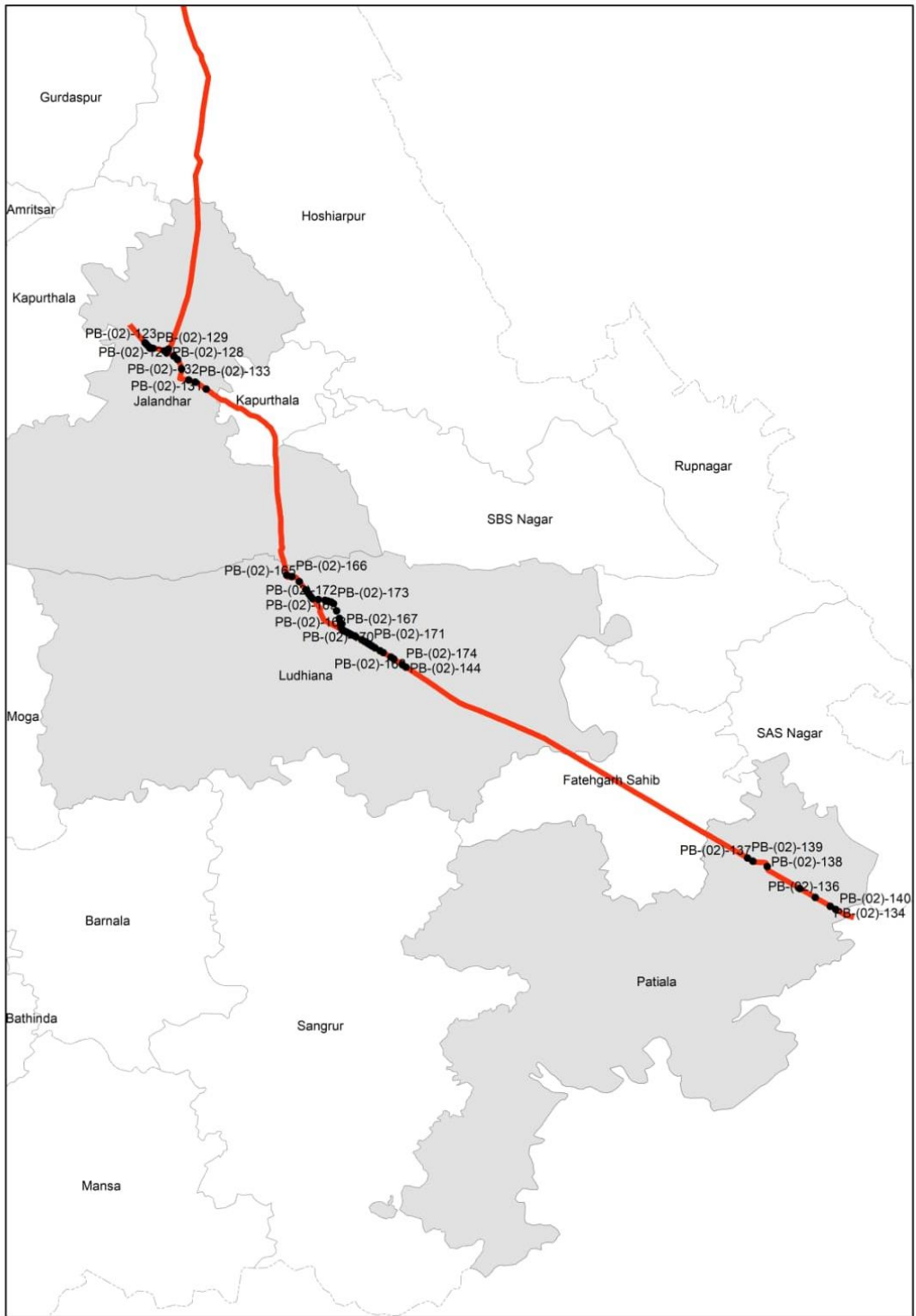


Figure 2 : Locations of Various Identified Black Spots on NH-44 (2016-2018)

### 3. POLICE STATION WISE ROAD ACCIDENT SCENARIO ON NH-44 (PUNJAB)

- Out of total 175km section of NH-44, a length of 70.68 (45%) Km comes under Black Spot

corridor, covering 55 identified black spots. A total 695 people have lost their lives in the

*According to Ministry of Road Transport & Highways (MoRTH), Government of India, road accident blackspot on National Highways is a road stretch of about 500m in length in which either 5 road accidents (involving fatalities/grievous injuries) took place during last three calendar years or 10 fatalities took place during last three calendar years*

last four years (2016-2019) on these accidental black spots.

- As per the road accident information collected for the last four years (2016-2019) about the various road accidents registered in 16 police stations through which 175 km long NH-44 traverse . Police station wise, maximum road accident fatalities are recorded on the stretch of NH-44 crossing Sahnewal (Ludhiana), Sambhu (Patiala) and Salem Tabri (Ludhiana) Police station limits contribute 189, 80 and 72 fatalities respectively. These are 49% of the total road accident fatalities reported in four years in 16 police stations through which 175 km long NH-44 traverse.
- Highway Black Spot stretches falling within Division No.1 (Jalandhar) and Sahnewal police stations observed with highest road accident fatalities per kilometre rate as 4.2 and 4.25 respectively. Annual average fatality rate per kilometre on this black spot corridor is 3.3. Police station and kilometre wise the road accident details are given in Table 1 and Figure 3.
- Out of 55 identified Black Spots on NH-44, 21 black spots are still showing increase in fatalities in the year 2019 as compared to year 2018. Data for the year 2020 has not considered for evaluation due to COVID-19 lockdown.

In the year 2008, National Highways Authority of India (NHAI) entered into an agreement with M/s. Soma Isolux NH One Toll way Private Limited for the Six Laning of Panipat- Jalandhar Section of NH-1 from km. 96.00 to km. 387.10 (length- 291.10 km) in the State of Haryana and Punjab to be executed as BOT (Toll) on DBFO Pattern under NHDP Phase-V. The last 174.9 km of this project falls within the State of Punjab, starting from Km 212.2 up to Km 387.1.

Table 1 : Police Station Wise Road Accident Details for NH-44

Sr. No.	Police Station	Police District	Chainage From	Chainage To	Road Stretch Length (in Kms) (A)	Year 2016		Year 2017		Year 2018		Year 2019		Total Fatalities (2016+2017+2018+2019) (B)	Police Station Wise Death Rate per KM per Year (B/A/4)
						Cases	Fatalities	Cases	Fatalities	Cases	Fatalities	Cases	Fatalities		
1	Sambhu	Patiala	212.2	227.1	14.9	14	14	28	27	26	17	37	22	80	1.34
2	City Rajpura	Patiala	227.1	232.2	5.1	5	4	6	7	10	9	7	6	26	1.27
3	Sadar Rajpura	Patiala	232.2	240.56	8.36	5	1	1	1	6	6	10	7	15	0.45
4	Sahnawal	Ludhiana Commissioner	297.96	309.08	11.12	58	56	63	59	47	34	44	40	189	4.25
5	Division No. 6	Ludhiana Commissioner	309.08	311.5	2.42	11	7	10	7	8	8	10	7	29	3.00
6	Moti Nagar	Ludhiana Commissioner	311.5	314.36	2.86	0	0	1	0	2	0	10	7	7	0.61
7	Division No. 7	Ludhiana Commissioner	314.36	315.3	0.94	2	2	2	0	0	0	2	1	3	0.80
8	Division No. 3	Ludhiana Commissioner	315.3	316.9	1.6	9	7	4	4	8	4	2	1	16	2.50
9	Jodhewal	Ludhiana Commissioner	316.9	319.4	2.5	8	7	9	8	8	6	7	5	26	2.60

Sr. No.	Police Station	Police District	Chainage From	Chainage To	Road Stretch Length (in Kms) (A)	Year 2016		Year 2017		Year 2018		Year 2019		Total Fatalities (2016+2017+2018+2019) (B)	Police Station Wise Death Rate per KM per Year (B/A/4)
						Cases	Fatalities	Cases	Fatalities	Cases	Fatalities	Cases	Fatalities		
10	Salem Tabri	Ludhiana Commissioner	319.4	326.18	6.78	24	14	21	14	18	16	36	28	72	2.65
11	Ladowal	Ludhiana Commissioner	326.18	329	2.82	17	16	18	16	5	4	6	3	39	3.46
12	Jalandhar Cantt	Jalandhar Commissioner	365.56	373.2	7.64	3	3	9	7	18	14	14	11	35	1.15
13	Rama Mandi	Jalandhar Commissioner	365.56	377.1	11.54	22	17	23	19	25	13	25	17	66	1.43
14	Navi Baradari	Jalandhar Commissioner	372.2	373.2	1	1	1	1	1	0	0	3	1	3	0.75
15	Divison No. 8	Jalandhar Commissioner	377.1	380.78	3.68	26	20	16	11	9	7	14	12	50	3.40
16	Divison No. 1	Jalandhar Commissioner	380.78	383.1	2.32	19	16	17	14	8	8	1	1	39	4.20
					<b>70.68</b>	<b>224</b>	<b>185</b>	<b>229</b>	<b>195</b>	<b>198</b>	<b>146</b>	<b>228</b>	<b>169</b>	<b>695</b>	<b>3.3</b>

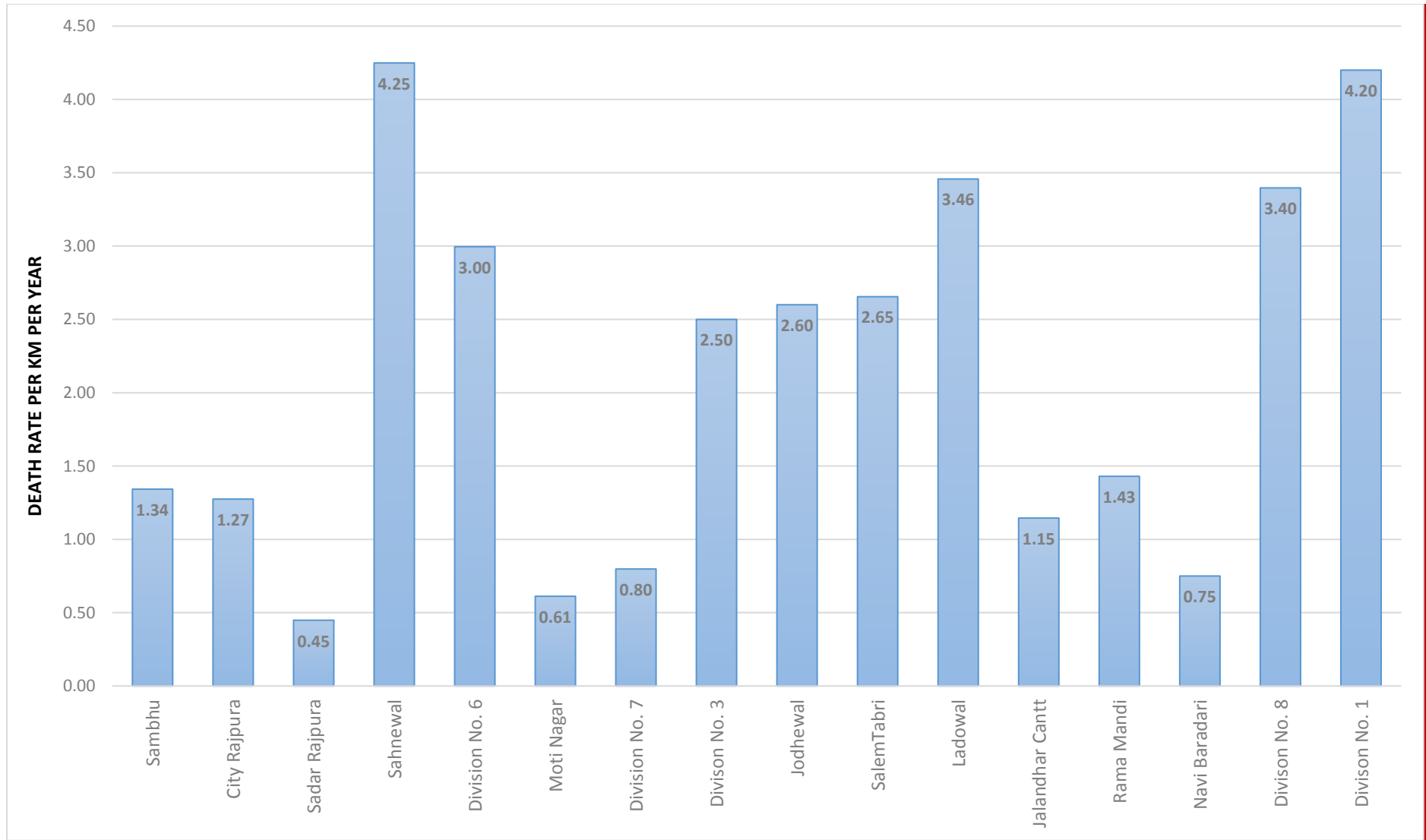


Figure 3: Police Station Wise Death Rate per Km per Year

#### 4. SUMMARY OF ROAD ACCIDENTS AND FATALITIES OF EXISTING BLACK SPOTS ON NH-44 (OLD NH-01)

A total of 55 black spots have been identified on NH-44 based on MoRTH's definition of black spots. In a detailed analysis it is found that out of these 55 black spots, 21 black spots are still showing increase in fatalities in the year 2019 as compared to year 2018. The summary is given in the TABLE 2

Table 2: Summary of Black Spots in Punjab

Sr. No.	MoRTH UID	Name of District (Traffic Unit)	Name of Jurisdictional Police Station	Road Number (NH/SH/MCR/ODR)	Location/ Place of Black Spot	Limits of High Accident Prone Location		Latitude	Longitude	Number of Accidents				Number of Fatalities				Change in Fatalities in 2019 w.r.t. 2018
						Starting from (km)	Ending to (km)			2016	2017	2018	2019	2016	2017	2018	2019	
1	PB-(02)-120	Jalandhar	Division 1	NH 44	Fair Farm Resort	382.921	383.421	31.370167	75.553352	3	2	0	0	3	1	0	0	0
2	PB-(02)-121	Jalandhar	Division 1	NH 44	Verka Milk Plant Under Bridge	381.918	382.418	31.363190	75.560041	2	6	0	0	1	5	0	0	0
3	PB-(02)-122	Jalandhar	Division 1	NH 44	Y-Point Bhagat Singh Colony	381.574	382.074	31.360469	75.562173	4	3	1	0	0	1	3	0	-3
4	PB-(02)-123	Jalandhar	Division 1	NH 44	T-Point- Jinda Road	382.526	383.026	31.367432	75.556009	3	1	3	1	2	5	1	1	0
5	PB-(02)-124	Jalandhar	Division 8	NH 44	Butta Singh Bldg Material Store	379.237	379.737	31.356453	75.586121	1	4	1	2	1	4	1	1	0
6	PB-(02)-125	Jalandhar	Division 8	NH 44	Pathankot Chowk	378.770	379.270	31.354614	75.590485	4	3	3	2	3	1	2	1	-1
7	PB-(02)-126	Jalandhar	Division 8	NH 44	Lamba Pind Chowk	377.400	377.900	31.347472	75.602216	2	2	2	8	4	1	1	4	3
8	PB-(02)-127	Jalandhar	Division 8	NH 44	T-Point Suchi Pind	376.510	377.010	31.341758	75.608433	4	2	3	0	3	1	4	0	-4
9	PB-(02)-128	Jalandhar	Division 8	NH 44	Reru	377.631	378.229	31.359203	75.593089	3	1	1	0	1	1	1	0	-1
10	PB-(02)-129	Jalandhar	Rama Mandi	NH 44	T-Point Hill view Colony Kalia Colony	381.133	381.633	31.360489	75.566942	2	3	3	1	2	2	2	1	-1
11	PB-(02)-130	Jalandhar	Rama Mandi	NH 44	Opp. JC Resort	374.604	375.104	31.325633	75.615095	3	4	2	1	2	4	2	1	-1
12	PB-(02)-131	Jalandhar	Rama Mandi	NH 44	Dhanowali Road	367.997	368.497	31.291749	75.656637	0	4	6	3	0	2	3	2	-1
13	PB-(02)-132	Jalandhar	Sadar Jal.	NH 44	Rama Mandi Chowk	371.319	371.819	31.307156	75.627179	1	2	2	1	1	4	3	1	-2
14	PB-(02)-	Jalandhar	Cantt Jal.	NH 44	Birring Gate, Dakoha	370.178	370.678	31.303420	75.638335	2	1	2	3	2	2	2	3	1



Sr. No.	MoRTH UID	Name of District (Traffic Unit)	Name of Jurisdictional Police Station	Road Number (NH/SH/MCR/ODR)	Location/ Place of Black Spot	Limits of High Accident Prone Location		Latitude	Longitude	Number of Accidents				Number of Fatalities				Change in Fatalities in 2019 w.r.t. 2018	
						Starting from (km)	Ending to (km)			2016	2017	2018	2019	2016	2017	2018	2019		
	133				Fatak														
15	PB-(02)-134	Patiala	Shambu	NH 44	Bapraur- Shambu near Surya world college	216.559	217.059	30.419000	76.709800	2	3	6	8	2	4	4	5	1	
16	PB-(02)-135	Patiala	Shambu	NH 44	Ghaggar sarai, Shambu to Rajpura	222.528	223.028	30.449000	76.658200	2	3	4	2	1	3	3	2	-1	
17	PB-(02)-136	Patiala	Shambu	NH 44	Near Sarai Mughal, Shambu	219.515	220.015	30.433974	76.684334	3	7	4	4	4	5	3	4	1	
18	PB-(02)-137	Patiala	City Rajpura	NH 44	Rajpura-Ambala highway	232.255	232.755	30.494900	76.579200	1	1	3	0	1	2	2	0	-2	
19	PB-(02)-138	Patiala	City Rajpura	NH 44	Eagle motel, Rajpura-Ambala road	229.380	229.880	30.486000	76.603400	1	1	3	1	0	0	0	0	0	
20	PB-(02)-139	Patiala	Sadar Rajpura, City Rajpura	NH 44	Near Nogaja Peer, Pilakhni, Rajpura	233.291	233.791	30.500200	76.570300	1	0	4	5	0	1	1	4	3	
21	PB-(02)-140	Patiala	Shambu	NH 44	Near Shambu barrier, Ambala-Rajpura road	215.489	215.989	30.413700	76.719100	1	5	5	3	0	6	3	1	-2	
22	PB-(02)-141	Ludhiana	Sahnewal	NH 44	Eastman caste & forge Ltd	304.402	304.902	30.849951	75.950386	7	5	2	5	10	5	2	5	3	
23	PB-(02)-142	Ludhiana	Sahnewal	NH 44	Goyal Jeep showroom	305.967	306.467	30.858156	75.937076	5	0	1	2	4	0	1	1	0	
24	PB-(02)-143	Ludhiana	Div No.6 + Sahnewal	NH 44	Giaspura Flyover	310.272	310.772	30.878920	75.899100	3	3	2	3	2	3	2	1	-1	
25	PB-(02)-144	Ludhiana	Sahnewal	NH 44	Red Mango restaurant	299.271	299.771	30.822675	75.993690	1	3	2	1	1	3	0	1	1	
26	PB-(02)-145	Ludhiana	Jodhewal	NH 44	Gur. Baba Bagga singh ji, Basti jodhewal	317.409	317.909	30.932633	75.867506	2	1	3	3	1	1	2	2	0	
27	PB-(02)-146	Ludhiana	Sahnewal	NH 44	Dhandari Kalan bus stop	309.150	309.650	30.873898	75.909266	7	8	2	2	6	7	1	2	1	
28	PB-(02)-147	Ludhiana	Div No.6	NH 44	HP Petrol station, Industrial area-A	313.962	314.462	30.904826	75.881686	3	0	2	1	2	0	2	1	-1	
29	PB-(02)-148	Ludhiana	Div No.6	NH 44	Oswal woollen mills	310.792	311.292	30.881451	75.894491	6	0	1	1	3	0	1	1	0	
30	PB-(02)-149	Ludhiana	Div No.6	NH 44	Hanuman mandir, sherpur chowk	311.168	311.668	30.882948	75.890973	3	3	0	6	3	3	0	5	5	
31	PB-(02)-150	Ludhiana	Salem Tabri + Jodhewal	NH 44	Karabara chowk	319.536	320.036	30.936781	75.845943	4	2	1	2	2	2	1	2	1	

Sr. No.	MoRTH UID	Name of District (Traffic Unit)	Name of Jurisdictional Police Station	Road Number (NH/SH/MCR/ODR)	Location/ Place of Black Spot	Limits of High Accident Prone Location		Latitude	Longitude	Number of Accidents				Number of Fatalities				Change in Fatalities in 2019 w.r.t. 2018
						Starting from (km)	Ending to (km)			2016	2017	2018	2019	2016	2017	2018	2019	
32	PB-(02)-151	Ludhiana	Div No.6	NH 44	Transport Nagar	313.057	313.557	30.896951	75.883835	3	2	2	2	2	2	2	1	-1
33	PB-(02)-152	Ludhiana	Sahnewal	NH 44	Dhandari Flyover	307.449	307.949	30.865821	75.924368	3	6	10	5	3	5	8	6	-2
34	PB-(02)-153	Ludhiana	Sahnewal	NH 44	Swani motors	309.785	310.285	30.876673	75.903458	3	4	3	1	3	5	2	1	-1
35	PB-(02)-154	Ludhiana	Sahnewal	NH 44	Sahnewal Bridge	301.754	302.254	30.836500	75.973268	7	10	6	1	8	10	4	1	-3
36	PB-(02)-155	Ludhiana	Salem Tabri	NH 44	Greenland school	321.034	321.534	30.941846	75.833163	9	6	2	8	5	4	2	6	4
37	PB-(02)-156	Ludhiana	Sahnewal	NH 44	Bhogal cycles, Dhandari Kalan	307.999	308.499	30.868538	75.919556	3	7	3	3	3	4	3	3	0
38	PB-(02)-157	Ludhiana	Sahnewal	NH 44	SEL Textiles	306.825	307.325	30.862483	75.929625	3	4	1	2	3	4	1	2	1
39	PB-(02)-158	Ludhiana	Div No.6	NH 44	Mohandai Oswal Hospital	312.255	312.755	30.889726	75.884218	2	1	4	5	2	0	2	3	1
40	PB-(02)-159	Ludhiana	Salem Tabri	NH 44	Metro mart, Mittran da Dhaba, Bhattian	322.527	323.027	30.953118	75.824633	4	3	3	2	2	3	3	2	-1
41	PB-(02)-160	Ludhiana	Salem Tabri	NH 44	GMT School, Jalandhar Bypass	320.546	321.046	30.938227	75.836070	10	5	0	9	8	2	0	4	4
42	PB-(02)-161	Ludhiana	Jodhewal	NH 44	Shivpuri Chowk	318.439	318.939	30.935312	75.857210	3	2	2	3	3	2	1	3	2
43	PB-(02)-162	Ludhiana	Sahnewal	NH 44	Gur. Reru sahib, sahnewal	302.325	302.825	30.839568	75.968466	5	3	0	2	3	3	0	2	2
44	PB-(02)-163	Ludhiana	Div No.3 + Jodhewal	NH 44	Tibba cut, near Tajpur chowk	315.442	315.942	30.917496	75.876793	8	7	3	5	6	7	3	4	1
45	PB-(02)-164	Ludhiana	Laddowal	NH 44	Laddowal chowk	327.132	327.632	30.977913	75.792620	2	4	0	3	2	4	0	2	2
46	PB-(02)-165	Ludhiana	Salem Tabri	NH 44	Kaddian T-point	324.376	324.876	30.966992	75.813870	1	4	3	1	1	3	3	1	-2
47	PB-(02)-166	Ludhiana	Laddowal + Salem Tabri	NH 44	Hardy's world	326.014	326.514	30.975441	75.801571	1	4	2	8	1	4	1	6	5
48	PB-(02)-167	Ludhiana	Div No.6 + Moti Nagar	NH 44	Sherpur Chowk	311.641	312.141	30.885480	75.886941	1	8	2	2	0	7	2	2	0
49	PB-(02)-168	Ludhiana	Sahnewal	NH 44	Zimidaran da Dhaba	303.803	304.303	30.847011	75.955658	3	2	1	4	3	1	1	2	1
50	PB-(02)-	Ludhiana	Salem	NH 44	Jassian cut, T-point	321.608	322.108	30.946235	75.830001	2	4	1	4	2	4	1	4	3

Sr. No.	MoRTH UID	Name of District (Traffic Unit)	Name of Jurisdictional Police Station	Road Number (NH/SH/MCR/ODR)	Location/ Place of Black Spot	Limits of High Accident Prone Location		Latitude	Longitude	Number of Accidents				Number of Fatalities				Change in Fatalities in 2019 w.r.t. 2018	
						Starting from (km)	Ending to (km)			2016	2017	2018	2019	2016	2017	2018	2019		
	169		Tabri																
51	PB-(02)-170	Ludhiana	Sahnewal	NH 44	UCO Bank, jugiana	305.414	305.914	30.855238	75.941763	3	3	4	1	4	3	4	1	-3	
52	PB-(02)-171	Ludhiana	Sahnewal	NH 44	Goyal Hyundai, Kanganwal	306.355	306.855	30.860074	75.933672	1	3	1	2	1	3	1	1	0	
53	PB-(02)-172	Ludhiana	Jodhewal	NH 44	Kailash Nagar chowk	317.921	318.421	30.934071	75.862436	7	6	3	4	6	5	2	2	0	
54	PB-(02)-173	Ludhiana	Jodhewal + Div No.3	NH 44	Basti Jodhewal chowk	316.901	317.401	30.929865	75.871606	7	1	7	5	6	0	5	5	0	
55	PB-(02)-174	Ludhiana	Sahnewal	NH 44	Sahnewal Khurd	300.049	300.549	30.827151	75.987421	0	1	5	0	0	1	2	0	-2	

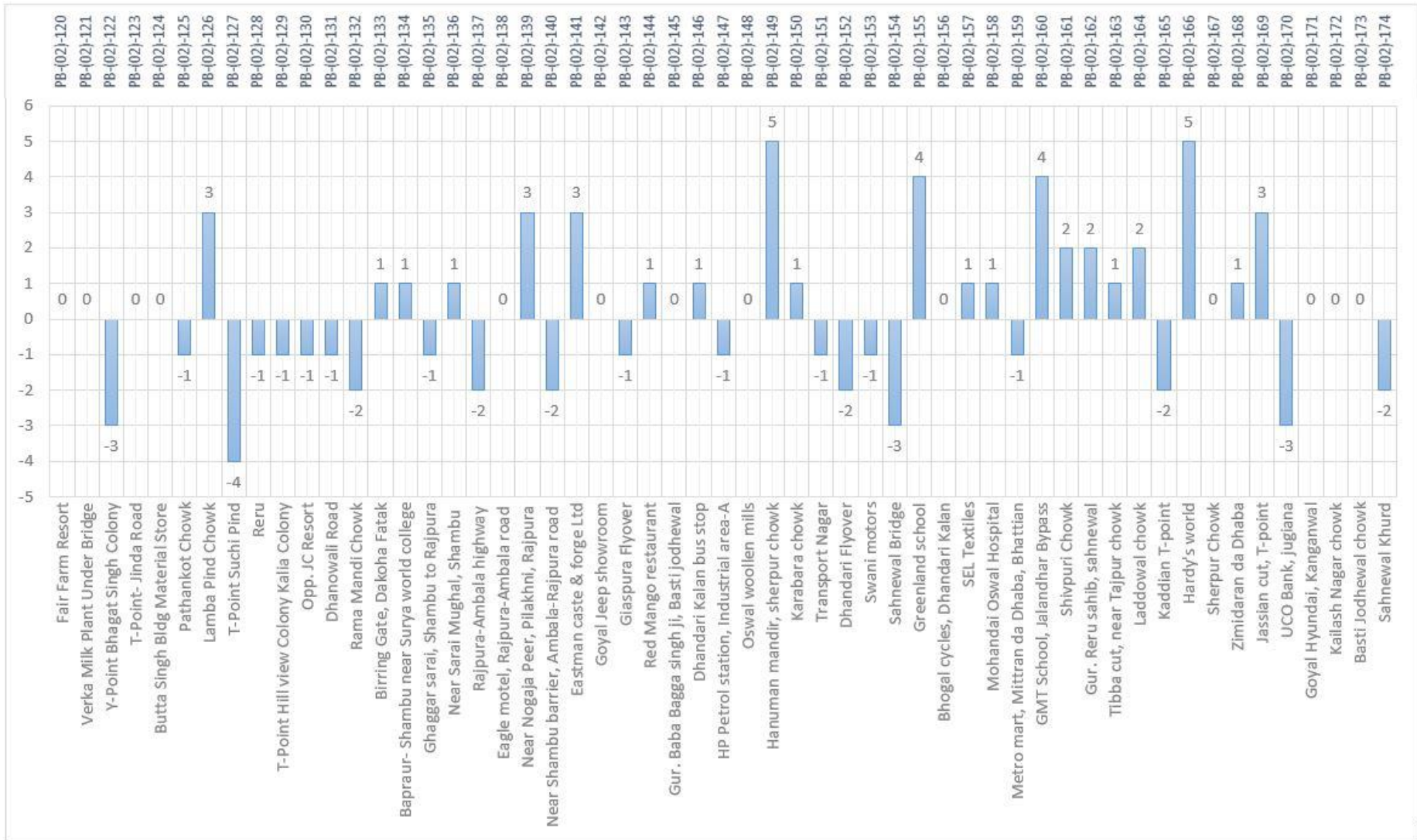


Figure 4: Change in Number of Road Accident Fatalities in the Year 2019 W.R.T. Year 2018

#### 4.1. FAIR FARM RESORT BLACK SPOT (UID: PB-(02)-120)

##### LOCATION DETAILS

MoRTH UID	Black Spot Local Name	District Jurisdiction	Road Number	GIS Coordinates		Chainage	
				Latitude	Longitude	Starting from (km)	Ending to (km)
PB-(02)-120	Fair Farm Resort	Jalandhar	NH 44	31.370167	75.553352	382.921	383.421



Table 3: Year wise distribution of Road Accidents and Fatalities

Year	Total Number of Road Accidents	Total Number of Fatalities	Change in Number of Fatalities w.r.t. previous year
2016	3	3	NA
2017	2	1	-2
2018	0	0	-1
2019	0	0	0

#### 4.2. VERKA MILK PLANT UNDER BRIDGE BLACK SPOT (UID: PB-(02)-121)

##### LOCATION DETAILS

MoRTH UID	Black Spot Local Name	District Jurisdiction	Road Number	GIS Coordinates		Chainage	
				Latitude	Longitude	Starting from (km)	Ending to (km)
PB-(02)-121	Verka Milk Plant Under Bridge	Jalandhar	NH 44	31.363190	75.560041	381.918	382.418



Table 4: Year wise distribution of Road Accidents and Fatalities

Year	Total Number of Road Accidents	Total Number of Fatalities	Change in Number of Fatalities w.r.t. previous year
2016	2	1	NA
2017	6	5	+4
2018	0	0	-5
2019	0	0	0



### 4.3. Y-POINT BHAGAT SINGH COLONY BLACK SPOT (UID: PB-(02)-122)

#### LOCATION DETAILS

MoRTH UID	Black Spot Local Name	District Jurisdiction	Road Number	GIS Coordinates		Chainage	
				Latitude	Longitude	Starting from (km)	Ending to (km)
PB-(02)-122	Y-Point Bhagat Singh Colony	Jalandhar	NH 44	31.360469	75.562173	381.574	382.074



Table 5: Year wise distribution of Road Accidents and Fatalities

Year	Total Number of Road Accidents	Total Number of Fatalities	Change in Number of Fatalities w.r.t. previous year
2016	4	0	NA
2017	3	1	+1
2018	1	3	+2
2019	0	0	-3

#### 4.4. T-POINT JINDA ROAD BLACK SPOT (UID: PB-(02)-123)

##### LOCATION DETAILS

MoRTH UID	Black Spot Local Name	District Jurisdiction	Road Number	GIS Coordinates		Chainage	
				Latitude	Longitude	Starting from (km)	Ending to (km)
PB-(02)-123	T-Point-Jinda Road	Jalandhar	NH 44	31.367432	75.556009	382.526	383.026



Table 6: Year wise distribution of Road Accidents and Fatalities

Year	Total Number of Road Accidents	Total Number of Fatalities	Change in Number of Fatalities w.r.t. previous year
2016	3	2	NA
2017	1	5	+3
2018	3	1	-4
2019	1	1	0



#### 4.5. BUTTA SINGH BUILDING MATERIAL STORE BLACK SPOT (UID: PB-(02)-124)

##### LOCATION DETAILS

MoRTH UID	Black Spot Local Name	District Jurisdiction	Road Number	GIS Coordinates		Chainage	
				Latitude	Longitude	Starting from (km)	Ending to (km)
PB-(02)-124	Butta Singh Building Material Store	Jalandhar	NH 44	31.356453	75.586121	379.237	379.737

Table 7 ; Year wise distribution of Road Accidents and Fatalities

Year	Total Number of Road Accidents	Total Number of Fatalities	Change in Number of Fatalities w.r.t. previous year
2016	1	1	NA
2017	4	4	+3
2018	1	1	-3
2019	2	1	0

#### 4.6. PATHANKOT CHOWK BLACK SPOT (UID: PB-(02)-125)

##### LOCATION DETAILS

MoRTH UID	Black Spot Local Name	District Jurisdiction	Road Number	GIS Coordinates		Chainage	
				Latitude	Longitude	Starting from (km)	Ending to (km)
PB-(02)-125	Pathankot Chowk	Jalandhar	NH 44	31.354614	75.590485	378.770	379.270



Table 8: Year wise distribution of Road Accidents and Fatalities

Year	Total Number of Road Accidents	Total Number of Fatalities	Change in Number of Fatalities w.r.t. previous year
2016	4	3	NA
2017	3	1	-2
2018	3	2	+1
2019	2	1	-1

#### 4.7. LAMBHA PIND CHOWK BLACK SPOT (UID: PB-(02)-126)

##### LOCATION DETAILS

MoRTH UID	Black Spot Local Name	District Jurisdiction	Road Number	GIS Coordinates		Chainage	
				Latitude	Longitude	Starting from (km)	Ending to (km)
PB-(02)-126	Lamba Pind Chowk	Jalandhar	NH 44	31.347472	75.602216	377.400	377.900



Table 9: Year wise distribution of Road Accidents and Fatalities

Year	Total Number of Road Accidents	Total Number of Fatalities	Change in Number of Fatalities w.r.t. previous year
2016	2	4	NA
2017	2	1	-3
2018	2	1	0
2019	8	4	+3

#### 4.8. T-POINT SUCHI PIND BLACK SPOT (UID: PB-(02)-127)

##### LOCATION DETAILS

MoRTH UID	Black Spot Local Name	District Jurisdiction	Road Number	GIS Coordinates		Chainage	
				Latitude	Longitude	Starting from (km)	Ending to (km)
PB-(02)-127	T-Point Suchi Pind	Jalandhar	NH 44	31.341758	75.608433	376.510	377.010



Table 10: Year wise distribution of Road Accidents and Fatalities

Year	Total Number of Road Accidents	Total Number of Fatalities	Change in Number of Fatalities w.r.t. previous year
2016	4	3	NA
2017	2	1	-2
2018	3	4	+3
2019	0	0	-4

#### 4.9. RERU BLACK SPOT (UID: PB-(02)-128)

##### LOCATION DETAILS

MoRTH UID	Black Spot Local Name	District Jurisdiction	Road Number	GIS Coordinates		Chainage	
				Latitude	Longitude	Starting from (km)	Ending to (km)
PB-(02)-128	Reru	Jalandhar	NH 44	31.359203	75.593089	377.631	378.229

Table 11: Year wise distribution of Road Accidents and Fatalities

Year	Total Number of Road Accidents	Total Number of Fatalities	Change in Number of Fatalities w.r.t. previous year
2016	3	1	NA
2017	1	1	0
2018	1	1	0
2019	0	0	-1

4.10. T-POINT HILL VIEW COLONY KALIA COLONY BLACK SPOT (UID: PB-(02)-129)

*LOCATION DETAILS*

MoRTH UID	Black Spot Local Name	District Jurisdiction	Road Number	GIS Coordinates		Chainage	
				Latitude	Longitude	Starting from (km)	Ending to (km)
PB-(02)-129	T-Point Hill view Colony Kalia Colony	Jalandhar	NH 44	31.360489	75.566942	381.133	381.633



Table 12: Year wise distribution of Road Accidents and Fatalities

Year	Total Number of Road Accidents	Total Number of Fatalities	Change in Number of Fatalities w.r.t. previous year
2016	2	2	NA
2017	3	2	0
2018	3	2	0
2019	1	1	-1

#### 4.11. OPPOSITE JC RESORT BLACK SPOT (UID: PB-(02)-130)

##### LOCATION DETAILS

MoRTH UID	Black Spot Local Name	District Jurisdiction	Road Number	GIS Coordinates		Chainage	
				Latitude	Longitude	Starting from (km)	Ending to (km)
PB-(02)-130	Opposite JC Resort	Jalandhar	NH 44	31.325633	75.615095	374.604	375.104



Table 13: Year wise distribution of Road Accidents and Fatalities

Year	Total Number of Road Accidents	Total Number of Fatalities	Change in Number of Fatalities w.r.t. previous year
2016	3	2	NA
2017	4	4	+2
2018	2	2	-2
2019	1	1	-1

#### 4.12. DHANOWALI ROAD BLACK SPOT (UID: PB-(02)-131)

##### LOCATION DETAILS

MoRTH UID	Black Spot Local Name	District Jurisdiction	Road Number	GIS Coordinates		Chainage	
				Latitude	Longitude	Starting from (km)	Ending to (km)
PB-(02)-131	Dhanowali Road	Jalandhar	NH 44	31.291749	75.656637	367.997	368.497



Table 14: Year wise distribution of Road Accidents and Fatalities

Year	Total Number of Road Accidents	Total Number of Fatalities	Change in Number of Fatalities w.r.t. previous year
2016	0	0	NA
2017	4	2	+2
2018	6	3	+1
2019	3	2	-1



#### 4.13. RAMA MANDI CHOWK BLACK SPOT (UID: PB-(02)-132)

##### LOCATION DETAILS

MoRTH UID	Black Spot Local Name	District Jurisdiction	Road Number	GIS Coordinates		Chainage	
				Latitude	Longitude	Starting from (km)	Ending to (km)
PB-(02)-132	Rama Mandi Chowk	Jalandhar	NH 44	31.307156	75.627179	371.319	371.819



Table 15: Year wise distribution of Road Accidents and Fatalities

Year	Total Number of Road Accidents	Total Number of Fatalities	Change in Number of Fatalities w.r.t. previous year
2016	1	1	NA
2017	2	4	+3
2018	2	3	-1
2019	1	1	-2

4.14. BIRRING GATE, DAKOHA FATAK BLACK SPOT (UID: PB-(02)-133)

*LOCATION DETAILS*

MoRTH UID	Black Spot Local Name	District Jurisdiction	Road Number	GIS Coordinates		Chainage	
				Latitude	Longitude	Starting from (km)	Ending to (km)
PB-(02)-133	Birring Gate, Dakoha Fatak	Jalandhar	NH 44	31.303420	75.638335	370.178	370.678



Table 16: Year wise distribution of Road Accidents and Fatalities

Year	Total Number of Road Accidents	Total Number of Fatalities	Change in Number of Fatalities w.r.t. previous year
2016	2	2	NA
2017	1	2	0
2018	2	2	0
2019	3	3	+1

4.15. BAPRAUR-SAMBU, SURYA WORLD COLLEGE BLACK SPOT (UID: PB-(02)-134)

LOCATION DETAILS

MoRTH UID	Black Spot Local Name	District Jurisdiction	Road Number	GIS Coordinates		Chainage	
				Latitude	Longitude	Starting from (km)	Ending to (km)
PB-(02)-134	Bapraur-Shambu near Surya world college	Patiala	NH 44	30.419000	76.709800	216.559	217.059



Table 17: Year wise distribution of Road Accidents and Fatalities

Year	Total Number of Road Accidents	Total Number of Fatalities	Change in Number of Fatalities w.r.t. previous year
2016	2	2	NA
2017	3	4	+2
2018	6	4	0
2019	8	5	+1

4.16. GHAGGAR SARAI, SHAMBHU TO RAJPURA BLACK SPOT (UID: PB-(02)-135)

LOCATION DETAILS

MoRTH UID	Black Spot Local Name	District Jurisdiction	Road Number	GIS Coordinates		Chainage	
				Latitude	Longitude	Starting from (km)	Ending to (km)
PB-(02)-135	Ghaggar Sarai, Shambu to Rajpura	Patiala	NH 44	30.449000	76.658200	222.528	223.028



Table 18: Year wise distribution of Road Accidents and Fatalities

Year	Total Number of Road Accidents	Total Number of Fatalities	Change in Number of Fatalities w.r.t. previous year
2016	2	1	NA
2017	3	3	+2
2018	4	3	0
2019	2	2	-1

4.17. NEAR SARAI MUGHAL, SHAMBU BLACK SPOT (UID: PB-(02)-136)

LOCATION DETAILS

MoRTH UID	Black Spot Local Name	District Jurisdiction	Road Number	GIS Coordinates		Chainage	
				Latitude	Longitude	Starting from (km)	Ending to (km)
PB-(02)-136	Near Sarai Mughal, Shambu	Patiala	NH 44	30.433974	76.684334	219.515	220.015



Table 19: Year wise distribution of Road Accidents and Fatalities

Year	Total Number of Road Accidents	Total Number of Fatalities	Change in Number of Fatalities w.r.t. previous year
2016	3	4	NA
2017	7	5	+1
2018	4	3	-2
2019	4	4	+1

4.18. RAJPURA-AMBALA HIGHWAY BLACK SPOT (UID: PB-(02)-137)

LOCATION DETAILS

MoRTH UID	Black Spot Local Name	District Jurisdiction	Road Number	GIS Coordinates		Chainage	
				Latitude	Longitude	Starting from (km)	Ending to (km)
PB-(02)-137	Rajpura-Ambala highway	Patiala	NH 44	30.494900	76.579200	232.255	232.755



Table 20: Year wise distribution of Road Accidents and Fatalities

Year	Total Number of Road Accidents	Total Number of Fatalities	Change in Number of Fatalities w.r.t. previous year
2016	1	1	NA
2017	1	2	+1
2018	3	2	0
2019	0	0	-2



4.19. EAGLE MOTEL, RAJPURA-AMBALA ROAD BLACK SPOT (UID: PB-(02)-138)

LOCATION DETAILS

MoRTH UID	Black Spot Local Name	District Jurisdiction	Road Number	GIS Coordinates		Chainage	
				Latitude	Longitude	Starting from (km)	Ending to (km)
PB-(02)-138	Eagle motel, Rajpura-Ambala road	Patiala	NH 44	30.486000	76.603400	229.380	229.880



Table 21: Year wise distribution of Road Accidents and Fatalities

Year	Total Number of Road Accidents	Total Number of Fatalities	Change in Number of Fatalities w.r.t. previous year
2016	1	0	NA
2017	1	0	0
2018	3	0	0
2019	1	0	0

4.20. NEAR NOGAJA PEER, PILAKHNI, RAJPURA BLACK SPOT (UID: PB-(02)-139)

LOCATION DETAILS

MoRTH UID	Black Spot Local Name	District Jurisdiction	Road Number	GIS Coordinates		Chainage	
				Latitude	Longitude	Starting from (km)	Ending to (km)
PB-(02)-139	Near Nogaja Peer, Pilakhni, Rajpura	Patiala	NH 44	30.500200	76.570300	233.291	233.791



Table 22: Year wise distribution of Road Accidents and Fatalities

Year	Total Number of Road Accidents	Total Number of Fatalities	Change in Number of Fatalities w.r.t. previous year
2016	1	0	NA
2017	0	1	+1
2018	4	1	0
2019	5	4	+3



4.21. NEAR SHAMBU BARRIER, AMBALA-RAJPURA BLACK SPOT (UID: PB-(02)-140)

LOCATION DETAILS

MoRTH UID	Black Spot Local Name	District Jurisdiction	Road Number	GIS Coordinates		Chainage	
				Latitude	Longitude	Starting from (km)	Ending to (km)
PB-(02)-140	Near Shambu barrier, Ambala-Rajpura road	Patiala	NH 44	30.413700	76.719100	215.489	215.989



Table 23: Year wise distribution of Road Accidents and Fatalities

Year	Total Number of Road Accidents	Total Number of Fatalities	Change in Number of Fatalities w.r.t. previous year
2016	1	0	NA
2017	5	6	+6
2018	5	3	-3
2019	3	1	-2

4.22. EASTMAN CASTE & FORGE LTD. BLACK SPOT (UID: PB-(02)-141)

LOCATION DETAILS

MoRTH UID	Black Spot Local Name	District Jurisdiction	Road Number	GIS Coordinates		Chainage	
				Latitude	Longitude	Starting from (km)	Ending to (km)
PB-(02)-141	Eastman Caste & Forge Ltd.	Ludhiana	NH 44	30.849951	75.950386	304.402	304.902



Table 24: Year wise distribution of Road Accidents and Fatalities

Year	Total Number of Road Accidents	Total Number of Fatalities	Change in Number of Fatalities w.r.t. previous year
2016	7	10	NA
2017	5	5	-5
2018	2	2	-3
2019	5	5	+3

4.23. GOYAL JEEP SHOWROOM BLACK SPOT (UID: PB-(02)-142)

LOCATION DETAILS

MoRTH UID	Black Spot Local Name	District Jurisdiction	Road Number	GIS Coordinates		Chainage	
				Latitude	Longitude	Starting from (km)	Ending to (km)
PB-(02)-142	Goyal Jeep showroom	Ludhiana	NH 44	30.858156	75.937076	305.967	306.467

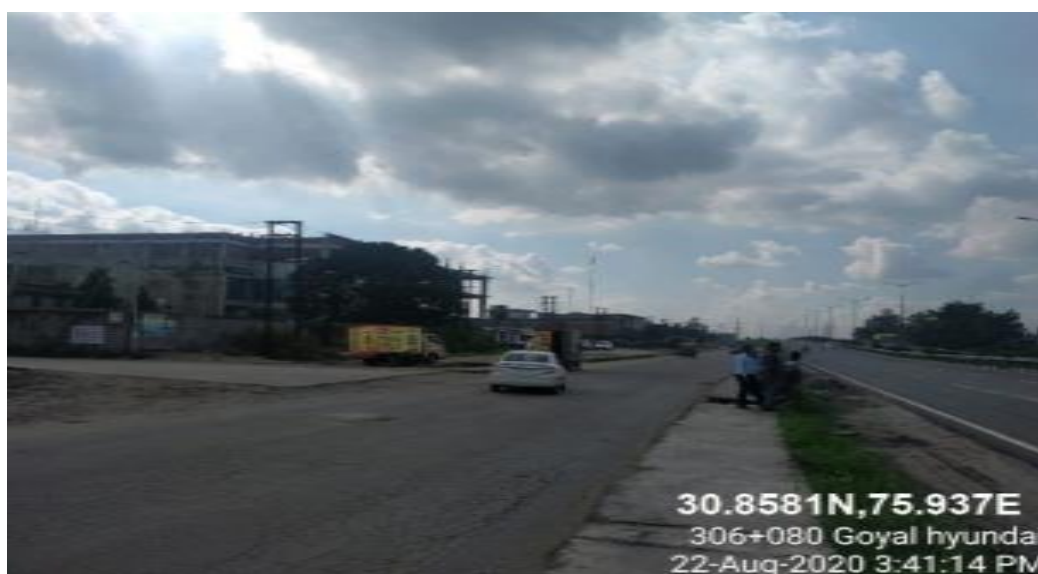


Table 25: Year wise distribution of Road Accidents and Fatalities

Year	Total Number of Road Accidents	Total Number of Fatalities	Change in Number of Fatalities w.r.t. previous year
2016	5	4	NA
2017	0	0	-4
2018	1	1	+1
2019	2	1	0

4.24. GIASPURA FLYOVER BLACK SPOT (UID: PB-(02)-143)

LOCATION DETAILS

MoRTH UID	Black Spot Local Name	District Jurisdiction	Road Number	GIS Coordinates		Chainage	
				Latitude	Longitude	Starting from (km)	Ending to (km)
PB-(02)-143	Giaspura Flyover	Ludhiana	NH 44	30.878920	75.899100	310.272	310.772



Table 26: Year wise distribution of Road Accidents and Fatalities

Year	Total Number of Road Accidents	Total Number of Fatalities	Change in Number of Fatalities w.r.t. previous year
2016	3	2	NA
2017	3	3	+1
2018	2	2	-1
2019	3	1	-1

4.25. RED MANGO RESTAURANT BLACK SPOT (UID: PB-(02)-144)

*LOCATION DETAILS*

MoRTH UID	Black Spot Local Name	District Jurisdiction	Road Number	GIS Coordinates		Chainage	
				Latitude	Longitude	Starting from (km)	Ending to (km)
PB-(02)-144	Red Mango restaurant	Ludhiana	NH 44	30.822675	75.993690	299.271	299.771



Table 27: Year wise distribution of Road Accidents and Fatalities

Year	Total Number of Road Accidents	Total Number of Fatalities	Change in Number of Fatalities w.r.t. previous year
2016	1	1	NA
2017	3	3	+2
2018	2	0	-3
2019	1	1	+1

4.26. GUR. BABA BAGGA SINGH, BASTI JODHEWAL BLACK SPOT (UID: PB-(02)-145)

*LOCATION DETAILS*

MoRTH UID	Black Spot Local Name	District Jurisdiction	Road Number	GIS Coordinates		Chainage	
				Latitude	Longitude	Starting from (km)	Ending to (km)
PB-(02)-145	Gur. Baba Bagga Singh, Basti Jodhewal	Ludhiana	NH 44	30.932633	75.867506	317.409	317.909

Table 28; Year wise distribution of Road Accidents and Fatalities

Year	Total Number of Road Accidents	Total Number of Fatalities	Change in Number of Fatalities w.r.t. previous year
2016	2	1	NA
2017	1	1	0
2018	3	2	+1
2019	3	2	0

4.27. DHANDARI KALAN BUS / RAILWAY STATION BLACK SPOT (UID: PB-(02)-146)

LOCATION DETAILS

MoRTH UID	Black Spot Local Name	District Jurisdiction	Road Number	GIS Coordinates		Chainage	
				Latitude	Longitude	Starting from (km)	Ending to (km)
PB-(02)-146	Dhandari Kalan Bus stop/ Railway Station	Ludhiana	NH 44	30.873898	75.909266	309.150	309.650



Table 29: Year wise distribution of Road Accidents and Fatalities

Year	Total Number of Road Accidents	Total Number of Fatalities	Change in Number of Fatalities w.r.t. previous year
2016	7	6	NA
2017	8	7	+1
2018	2	1	-6
2019	2	2	+1



4.28. HP PETROL STATION, INDUSTRIAL AREA-A BLACK SPOT (UID: PB-(02)-147)

LOCATION DETAILS

MoRTH UID	Black Spot Local Name	District Jurisdiction	Road Number	GIS Coordinates		Chainage	
				Latitude	Longitude	Starting from (km)	Ending to (km)
PB-(02)-147	HP Petrol Station, Industrial Area-A	Ludhiana	NH 44	30.904826	75.881686	313.962	314.462

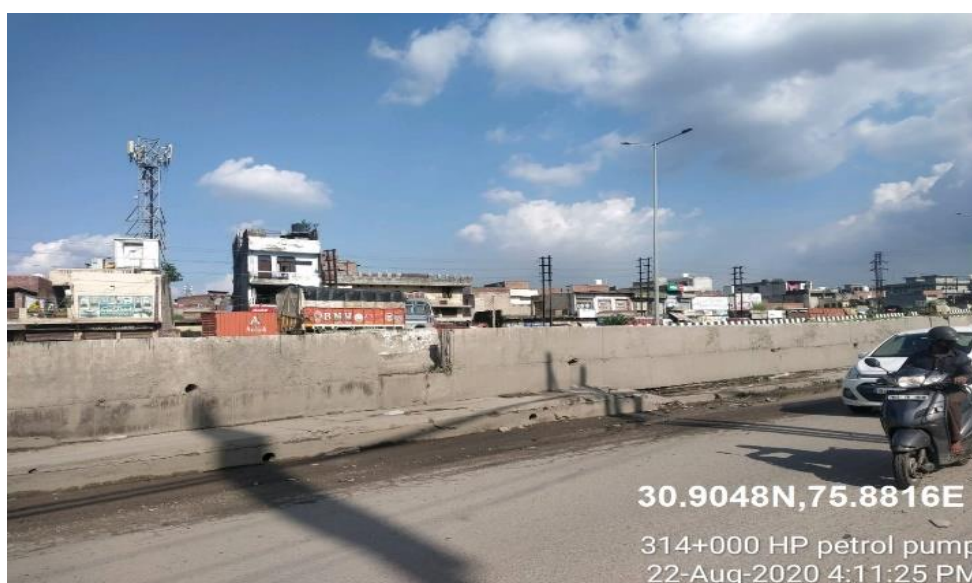


Table 30: Year wise distribution of Road Accidents and Fatalities

Year	Total Number of Road Accidents	Total Number of Fatalities	Change in Number of Fatalities w.r.t. previous year
2016	3	2	NA
2017	0	0	-2
2018	2	2	+2
2019	1	1	-1



4.29. OSWAL WOOLLEN MILLS BLACK SPOT (UID: PB-(02)-148)

LOCATION DETAILS

MoRTH UID	Black Spot Local Name	District Jurisdiction	Road Number	GIS Coordinates		Chainage	
				Latitude	Longitude	Starting from (km)	Ending to (km)
PB-(02)-148	Oswal woollen Mills	Ludhiana	NH 44	30.881451	75.894491	310.792	311.292



Table 31: Year wise distribution of Road Accidents and Fatalities

Year	Total Number of Road Accidents	Total Number of Fatalities	Change in Number of Fatalities w.r.t. previous year
2016	6	3	NA
2017	0	0	-3
2018	1	1	+1
2019	1	1	0

4.30. HANUMAN MANDIR, SHERPUR CHOWK BLACK SPOT (UID: PB-(02)-149)

LOCATION DETAILS

MoRTH UID	Black Spot Local Name	District Jurisdiction	Road Number	GIS Coordinates		Chainage	
				Latitude	Longitude	Starting from (km)	Ending to (km)
PB-(02)-149	Hanuman Mandir, Sherpur Chowk	Ludhiana	NH 44	30.882948	75.890973	311.168	311.668



Table 32: Year wise distribution of Road Accidents and Fatalities

Year	Total Number of Road Accidents	Total Number of Fatalities	Change in Number of Fatalities w.r.t. previous year
2016	3	3	NA
2017	3	3	0
2018	0	0	-3
2019	6	5	+5

4.31. KARBARA CHOWK BLACK SPOT (UID: PB-(02)-150)

LOCATION DETAILS

MoRTH UID	Black Spot Local Name	District Jurisdiction	Road Number	GIS Coordinates		Chainage	
				Latitude	Longitude	Starting from (km)	Ending to (km)
PB-(02)-150	Karabara Chowk	Ludhiana	NH 44	30.936781	75.845943	319.536	320.036



Table 33 : Year wise distribution of Road Accidents and Fatalities

Year	Total Number of Road Accidents	Total Number of Fatalities	Change in Number of Fatalities w.r.t. previous year
2016	4	2	NA
2017	2	2	0
2018	1	1	-1
2019	2	2	+1

4.32. TRANSPORT NAGAR BLACK SPOT (UID: PB-(02)-151)

*LOCATION DETAILS*

MoRTH UID	Black Spot Local Name	District Jurisdiction	Road Number	GIS Coordinates		Chainage	
				Latitude	Longitude	Starting from (km)	Ending to (km)
PB-(02)-151	Transport Nagar	Ludhiana	NH 44	30.896951	75.883835	313.057	313.557



Table 34: Year wise distribution of Road Accidents and Fatalities

Year	Total Number of Road Accidents	Total Number of Fatalities	Change in Number of Fatalities w.r.t. previous year
2016	3	2	NA
2017	2	2	0
2018	2	2	0
2019	2	1	-1

4.33. DHANDARI FLYOVER BLACK SPOT (UID: PB-(02)-152)

LOCATION DETAILS

MoRTH UID	Black Spot Local Name	District Jurisdiction	Road Number	GIS Coordinates		Chainage	
				Latitude	Longitude	Starting from (km)	Ending to (km)
PB-(02)-152	Dhandari Flyover	Ludhiana	NH 44	30.865821	75.924368	307.449	307.949



Table 35: Year wise distribution of Road Accidents and Fatalities

Year	Total Number of Road Accidents	Total Number of Fatalities	Change in Number of Fatalities w.r.t. previous year
2016	3	3	NA
2017	6	5	+2
2018	10	8	+3
2019	5	6	-2



4.34. SWANI MOTORS BLACK SPOT (UID: PB-(02)-153)

LOCATION DETAILS

MoRTH UID	Black Spot Local Name	District Jurisdiction	Road Number	GIS Coordinates		Chainage	
				Latitude	Longitude	Starting from (km)	Ending to (km)
PB-(02)-153	Swani Motors	Ludhiana	NH 44	30.876673	75.903458	309.785	310.285



Table 36: Year wise distribution of Road Accidents and Fatalities

Year	Total Number of Road Accidents	Total Number of Fatalities	Change in Number of Fatalities w.r.t. previous year
2016	3	3	NA
2017	4	5	+2
2018	3	2	-3
2019	1	1	-1

4.35. SAHNEWAL BRIDGE BLACK SPOT (UID: PB-(02)-154)

LOCATION DETAILS

MoRTH UID	Black Spot Local Name	District Jurisdiction	Road Number	GIS Coordinates		Chainage	
				Latitude	Longitude	Starting from (km)	Ending to (km)
PB-(02)-154	Sahnewal Bridge	Ludhiana	NH 44	30.836500	75.973268	301.754	302.254



Table 37: Year wise distribution of Road Accidents and Fatalities

Year	Total Number of Road Accidents	Total Number of Fatalities	Change in Number of Fatalities w.r.t. previous year
2016	7	8	NA
2017	10	10	+2
2018	6	4	-6
2019	1	1	-3

4.36. GREENLAND SCHOOL BLACK SPOT (UID: PB-(02)-155)

*LOCATION DETAILS*

MoRTH UID	Black Spot Local Name	District Jurisdiction	Road Number	GIS Coordinates		Chainage	
				Latitude	Longitude	Starting from (km)	Ending to (km)
PB-(02)-155	Greenland School	Ludhiana	NH 44	30.941846	75.833163	321.034	321.534



Table 38: Year wise distribution of Road Accidents and Fatalities

Year	Total Number of Road Accidents	Total Number of Fatalities	Change in Number of Fatalities w.r.t. previous year
2016	9	5	NA
2017	6	4	-1
2018	2	2	-2
2019	8	6	+4



4.37. BHOGAL CYCLES, DHANDARI KALAN BLACK SPOT (UID: PB-(02)-156)

LOCATION DETAILS

MoRTH UID	Black Spot Local Name	District Jurisdiction	Road Number	GIS Coordinates		Chainage	
				Latitude	Longitude	Starting from (km)	Ending to (km)
PB-(02)-156	Bhogal Cycles, Dhandari Kalan	Ludhiana	NH 44	30.868538	75.919556	307.999	308.499



Table 39: Year wise distribution of Road Accidents and Fatalities

Year	Total Number of Road Accidents	Total Number of Fatalities	Change in Number of Fatalities w.r.t. previous year
2016	3	3	NA
2017	7	4	+1
2018	3	3	-1
2019	3	3	0

4.38. SEL TEXTILES BLACK SPOT (UID: PB-(02)-157)

*LOCATION DETAILS*

MoRTH UID	Black Spot Local Name	District Jurisdiction	Road Number	GIS Coordinates		Chainage	
				Latitude	Longitude	Starting from (km)	Ending to (km)
PB-(02)-157	SEL Textiles	Ludhiana	NH 44	30.862483	75.929625	306.825	307.325



Table 40: Year wise distribution of Road Accidents and Fatalities

Year	Total Number of Road Accidents	Total Number of Fatalities	Change in Number of Fatalities w.r.t. previous year
2016	3	3	NA
2017	4	4	+1
2018	1	1	-3
2019	2	2	+1

4.39. MOHANDAI OSWAL HOSPITAL BLACK SPOT (UID: PB-(02)-158)

*LOCATION DETAILS*

MoRTH UID	Black Spot Local Name	District Jurisdiction	Road Number	GIS Coordinates		Chainage	
				Latitude	Longitude	Starting from (km)	Ending to (km)
PB-(02)-158	Mohandai Oswal Hospital	Ludhiana	NH 44	30.889726	75.884218	312.255	312.755

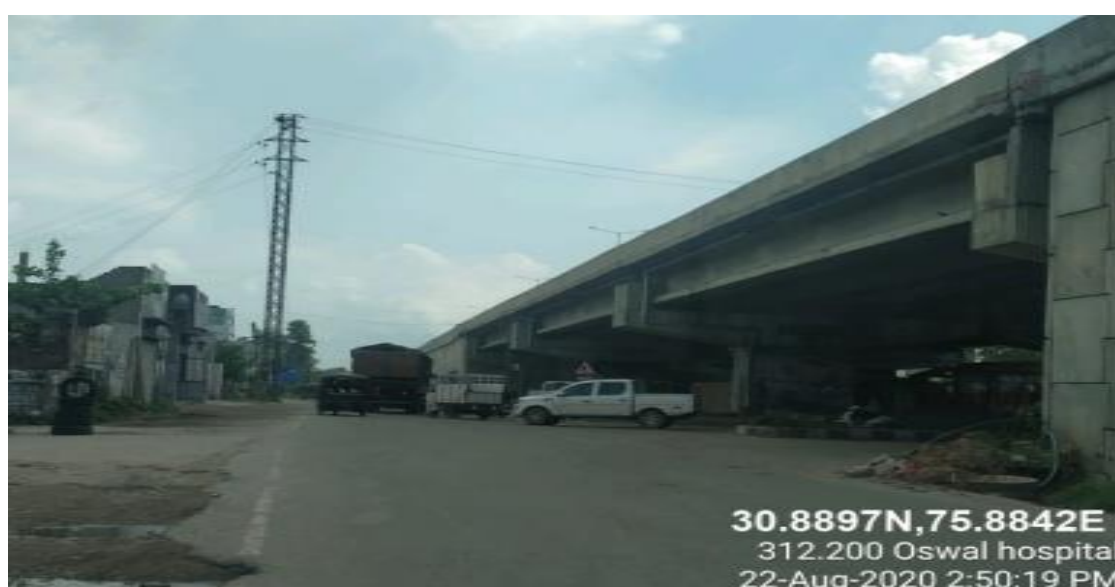


Table 41: Year wise distribution of Road Accidents and Fatalities

Year	Total Number of Road Accidents	Total Number of Fatalities	Change in Number of Fatalities w.r.t. previous year
2016	2	2	NA
2017	1	0	-2
2018	4	2	+2
2019	5	3	+1

4.40. METRO MART, MITRAN DA DHABA BHATTIAN BLACK SPOT (UID: PB-(02)-159)

LOCATION DETAILS

MoRTH UID	Black Spot Local Name	District Jurisdiction	Road Number	GIS Coordinates		Chainage	
				Latitude	Longitude	Starting from (km)	Ending to (km)
PB-(02)-159	Metro Mart, Mittran da Dhaba, Bhattian	Ludhiana	NH 44	30.953118	75.824633	322.527	323.027

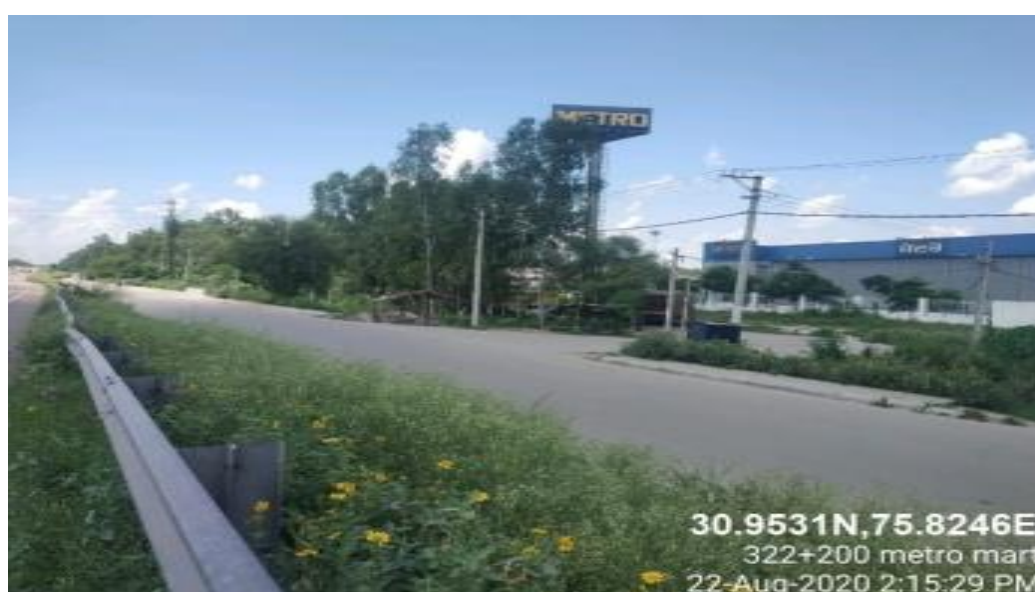


Table 42: Year wise distribution of Road Accidents and Fatalities

Year	Total Number of Road Accidents	Total Number of Fatalities	Change in Number of Fatalities w.r.t. previous year
2016	4	2	NA
2017	3	3	+1
2018	3	3	0
2019	2	2	-1

4.41. GMT SCHOOL, JALANDHAR BYPASS BLACK SPOT (UID: PB-(02)-160)

LOCATION DETAILS

MoRTH UID	Black Spot Local Name	District Jurisdiction	Road Number	GIS Coordinates		Chainage	
				Latitude	Longitude	Starting from (km)	Ending to (km)
PB-(02)-160	GMT School, Jalandhar Bypass	Ludhiana	NH 44	30.938227	75.836070	320.546	321.046



Table 43: Year wise distribution of Road Accidents and Fatalities

Year	Total Number of Road Accidents	Total Number of Fatalities	Change in Number of Fatalities w.r.t. previous year
2016	10	8	NA
2017	5	2	-6
2018	0	0	-2
2019	9	4	+4



4.42. SHIVPURI CHOWK BLACK SPOT (UID: PB-(02)-161)

LOCATION DETAILS

MoRTH UID	Black Spot Local Name	District Jurisdiction	Road Number	GIS Coordinates		Chainage	
				Latitude	Longitude	Starting from (km)	Ending to (km)
PB-(02)-161	Shivpuri Chowk	Ludhiana	NH 44	30.935312	75.857210	318.439	318.939



Table 44: Year wise distribution of Road Accidents and Fatalities

Year	Total Number of Road Accidents	Total Number of Fatalities	Change in Number of Fatalities w.r.t. previous year
2016	3	3	NA
2017	2	2	-1
2018	2	1	-1
2019	3	3	+2

4.43. GURUDWARA RERU SAHIB, SAHNEWAL BLACK SPOT (UID: PB-(02)-162)

LOCATION DETAILS

MoRTH UID	Black Spot Local Name	District Jurisdiction	Road Number	GIS Coordinates		Chainage	
				Latitude	Longitude	Starting from (km)	Ending to (km)
PB-(02)-162	Gur. Reru Sahib, Sahnewal	Ludhiana	NH 44	30.839568	75.968466	302.325	302.825

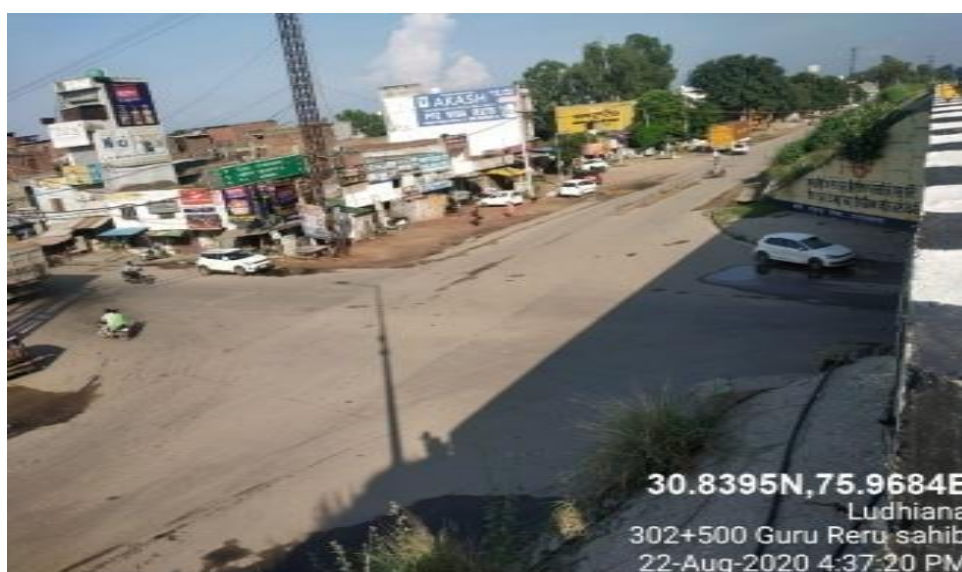


Table 45: Year wise distribution of Road Accidents and Fatalities

Year	Total Number of Road Accidents	Total Number of Fatalities	Change in Number of Fatalities w.r.t. previous year
2016	5	3	NA
2017	3	3	0
2018	0	0	-3
2019	2	2	+2

4.44. TIBBA CUT, NEAR TAJPUR CHOWK BLACK SPOT (UID: PB-(02)-163)

LOCATION DETAILS

MoRTH UID	Black Spot Local Name	District Jurisdiction	Road Number	GIS Coordinates		Chainage	
				Latitude	Longitude	Starting from (km)	Ending to (km)
PB-(02)-163	Tibba cut, near Tajpur Chowk	Ludhiana	NH 44	30.917496	75.876793	315.442	315.942



Table 46: Year wise distribution of Road Accidents and Fatalities

Year	Total Number of Road Accidents	Total Number of Fatalities	Change in Number of Fatalities w.r.t. previous year
2016	8	6	NA
2017	7	7	+1
2018	3	3	-4
2019	5	4	+1



4.45. LADDOWAL CHOWK BLACK SPOT (UID: PB-(02)-164)

LOCATION DETAILS

MoRTH UID	Black Spot Local Name	District Jurisdiction	Road Number	GIS Coordinates		Chainage	
				Latitude	Longitude	Starting from (km)	Ending to (km)
PB-(02)-164	Laddowal chowk	Ludhiana	NH 44	30.977913	75.792620	327.132	327.632

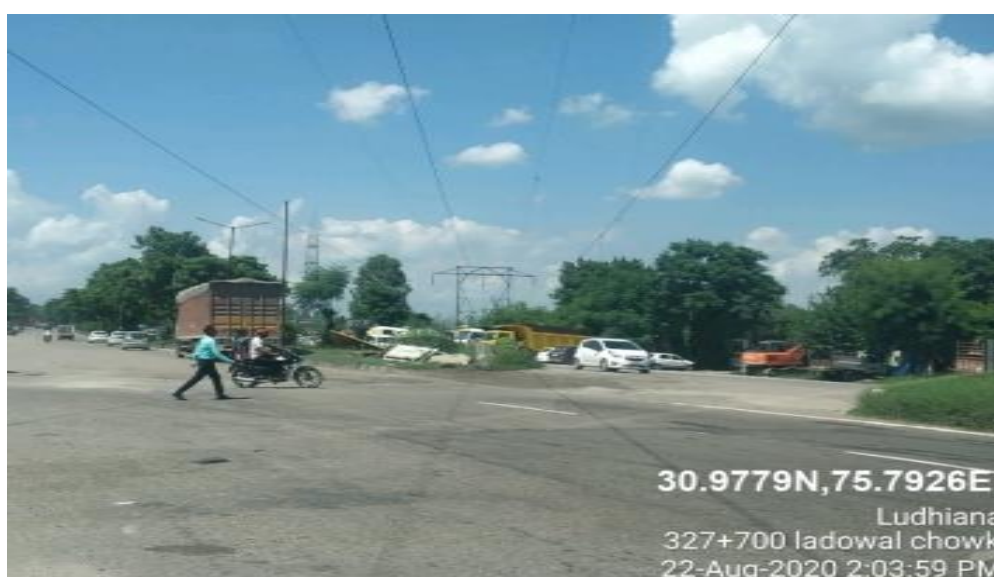


Table 47: Year wise distribution of Road Accidents and Fatalities

Year	Total Number of Road Accidents	Total Number of Fatalities	Change in Number of Fatalities w.r.t. previous year
2016	2	2	NA
2017	4	4	+2
2018	0	0	-4
2019	3	2	+2

4.46. KADDIAN T-POINT BLACK SPOT (UID: PB-(02)-165)

*LOCATION DETAILS*

MoRTH UID	Black Spot Local Name	District Jurisdiction	Road Number	GIS Coordinates		Chainage	
				Latitude	Longitude	Starting from (km)	Ending to (km)
PB-(02)-165	Kaddian T-point	Ludhiana	NH 44	30.966992	75.813870	324.376	324.876



Table 48: Year wise distribution of Road Accidents and Fatalities

Year	Total Number of Road Accidents	Total Number of Fatalities	Change in Number of Fatalities w.r.t. previous year
2016	1	1	NA
2017	4	3	+2
2018	3	3	0
2019	1	1	-2

4.47. HARDY'S WORLD BLACK SPOT (UID: PB-(02)-166)

LOCATION DETAILS

MoRTH UID	Black Spot Local Name	District Jurisdiction	Road Number	GIS Coordinates		Chainage	
				Latitude	Longitude	Starting from (km)	Ending to (km)
PB-(02)-166	Hardy's World	Ludhiana	NH 44	30.975441	75.801571	326.014	326.514



Table 49: Year wise distribution of Road Accidents and Fatalities

Year	Total Number of Road Accidents	Total Number of Fatalities	Change in Number of Fatalities w.r.t. previous year
2016	1	1	NA
2017	4	4	+3
2018	2	1	-3
2019	8	6	+5

4.48. SHERPUR CHOWK BLACK SPOT (UID: PB-(02)-167)

LOCATION DETAILS

MoRTH UID	Black Spot Local Name	District Jurisdiction	Road Number	GIS Coordinates		Chainage	
				Latitude	Longitude	Starting from (km)	Ending to (km)
PB-(02)-167	Sherpur Chowk	Ludhiana	NH 44	30.885480	75.886941	311.641	312.141



Table 50: Year wise distribution of Road Accidents and Fatalities

Year	Total Number of Road Accidents	Total Number of Fatalities	Change in Number of Fatalities w.r.t. previous year
2016	1	0	NA
2017	8	7	+7
2018	2	2	-5
2019	2	2	0

4.49. ZIMIDARAN DA DHABA BLACK SPOT (UID: PB-(02)-168)

*LOCATION DETAILS*

MoRTH UID	Black Spot Local Name	District Jurisdiction	Road Number	GIS Coordinates		Chainage	
				Latitude	Longitude	Starting from (km)	Ending to (km)
PB-(02)-168	Zimidaran da Dhaba	Ludhiana	NH 44	30.847011	75.955658	303.803	304.303



Table 51: Year wise distribution of Road Accidents and Fatalities

Year	Total Number of Road Accidents	Total Number of Fatalities	Change in Number of Fatalities w.r.t. previous year
2016	3	3	NA
2017	2	1	-2
2018	1	1	0
2019	4	2	+1

4.50. JASSIAN CUT, T-POINT BLACK SPOT (UID: PB-(02)-169)

LOCATION DETAILS

MoRTH UID	Black Spot Local Name	District Jurisdiction	Road Number	GIS Coordinates		Chainage	
				Latitude	Longitude	Starting from (km)	Ending to (km)
PB-(02)-169	Jassian cut, T-point	Ludhiana	NH 44	30.946235	75.830001	321.608	322.108



Table 52: Year wise distribution of Road Accidents and Fatalities

Year	Total Number of Road Accidents	Total Number of Fatalities	Change in Number of Fatalities w.r.t. previous year
2016	2	2	NA
2017	4	4	+2
2018	1	1	-3
2019	4	4	+3

4.51. UCO BANK, JUGIANA BLACK SPOT (UID: PB-(02)-170)

*LOCATION DETAILS*

MoRTH UID	Black Spot Local Name	District Jurisdiction	Road Number	GIS Coordinates		Chainage	
				Latitude	Longitude	Starting from (km)	Ending to (km)
PB-(02)-170	UCO Bank, Jugiana	Ludhiana	NH 44	30.855238	75.941763	305.414	305.914

Table 53: Year wise distribution of Road Accidents and Fatalities

Year	Total Number of Road Accidents	Total Number of Fatalities	Change in Number of Fatalities w.r.t. previous year
2016	3	4	NA
2017	3	3	-1
2018	4	4	+1
2019	1	1	-3



4.52. GOYAL HYUNDAI, KANGANWAL BLACK SPOT (UID: PB-(02)-171)

LOCATION DETAILS

MoRTH UID	Black Spot Local Name	District Jurisdiction	Road Number	GIS Coordinates		Chainage	
				Latitude	Longitude	Starting from (km)	Ending to (km)
PB-(02)-171	Goyal Hyundai, Kanganwal	Ludhiana	NH 44	30.860074	75.933672	306.355	306.855

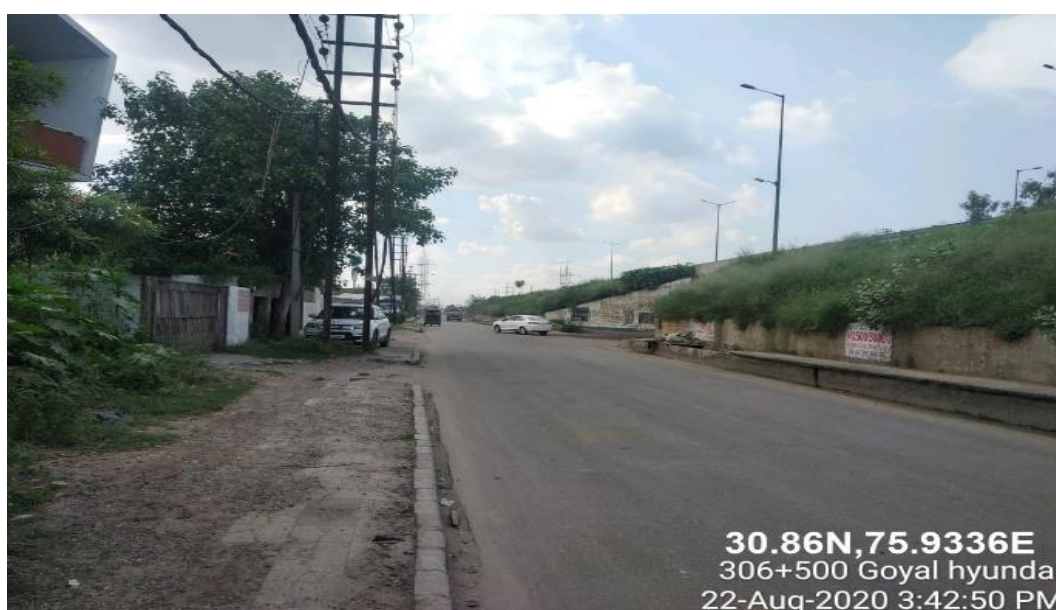


Table 54: Year wise distribution of Road Accidents and Fatalities

Year	Total Number of Road Accidents	Total Number of Fatalities	Change in Number of Fatalities w.r.t. previous year
2016	1	1	NA
2017	3	3	+2
2018	1	1	-2
2019	2	1	0



4.53. KAILASH NAGAR CHOWK BLACK SPOT (UID: PB-(02)-172)

LOCATION DETAILS

MoRTH UID	Black Spot Local Name	District Jurisdiction	Road Number	GIS Coordinates		Chainage	
				Latitude	Longitude	Starting from (km)	Ending to (km)
PB-(02)-172	Kailash Nagar Chowk	Ludhiana	NH 44	30.934071	75.862436	317.921	318.421



Table 55: Year wise distribution of Road Accidents and Fatalities

Year	Total Number of Road Accidents	Total Number of Fatalities	Change in Number of Fatalities w.r.t. previous year
2016	7	6	NA
2017	6	5	-1
2018	3	2	-3
2019	4	2	0

4.54. BASTI JODHEWAL CHOWK BLACK SPOT (UID: PB-(02)-173)

*LOCATION DETAILS*

MoRTH UID	Black Spot Local Name	District Jurisdiction	Road Number	GIS Coordinates		Chainage	
				Latitude	Longitude	Starting from (km)	Ending to (km)
PB-(02)-173	Basti Jodhewal Chowk	Ludhiana	NH 44	30.929865	75.871606	316.901	317.401



Table 56: Year wise distribution of Road Accidents and Fatalities

Year	Total Number of Road Accidents	Total Number of Fatalities	Change in Number of Fatalities w.r.t. previous year
2016	7	6	NA
2017	1	0	-6
2018	7	5	+5
2019	5	5	0

4.55. SAHNEWAL KHURAD BLACK SPOT (UID: PB-(02)-174)

LOCATION DETAILS

MoRTH UID	Black Spot Local Name	District Jurisdiction	Road Number	GIS Coordinates		Chainage	
				Latitude	Longitude	Starting from (km)	Ending to (km)
PB-(02)-174	Sahnewal Khurd	Ludhiana	NH 44	30.827151	75.987421	300.049	300.549



Table 57: Year wise distribution of Road Accidents and Fatalities

Year	Total Number of Road Accidents	Total Number of Fatalities	Change in Number of Fatalities w.r.t. previous year
2016	0	0	NA
2017	1	1	+1
2018	5	2	+1
2019	0	0	-2

