

Annexure 3 (Part A)

Assessment of Current Status of SUWIDHA Centres (District Level)

Punjab Governance Reforms Commission																						
Assessment of services provided at District Headquarters																						
1 = YES 0 = NO																						
Sr. No.	Details	ASR	BRN	BTI	FDK	FGS	FZR	GSR	HSR	JAL	KPT	LDH	MNS	MGA	MHA	MKT	NSH	PTL	RPR	SGR	TT	Total
1.1	Arm Licences related Services	1	1	1	1	1	1	1	1	1	1	1	1	1	1	1	1	1	1	1	1	20
1.2	Services to Pensioners	0	0	0	0	0	0	0	0	0	0	0	0	0	0	0	1	0	0	0	0	1
1.3	Counter Signing of Documents	1	1	1	1	1	1	1	1	1	1	1	1	1	1	1	1	1	1	1	1	20
1.4	Character Verification	0	0	0	0	0	0	0	0	1	0	1	0	0	1	0	1	0	0	0	0	4
1.5	Issuances of Bus Passes	0	0	0	1	0	0	0	0	0	1	1	1	0	0	1	1	1	0	0	0	7
1.6	Issuance of Dependent Certificate	0	0	1	0	0	0	0	1	1	0	0	0	0	0	1	1	0	0	1	0	6
1.7	Issuance of Unmarried Certificate	1	0	1	0	0	0	1	1	1	1	0	0	1	0	0	0	1	0	1	0	9
1.8	Issuance of Licenses	0	0	0	1	0	0	0	0	1	1	1	1	1	0	1	1	0	0	0	1	9
1.9	Endorsement of SPA/GPA	0	0	0	0	0	0	0	0	0	0	0	0	0	0	0	1	0	0	0	0	1
1.1	Issuance of Nationality Certificate	0	0	0	0	0	0	0	0	0	0	0	0	0	0	0	0	0	0	0	0	0
1.11	Issuance of Copy of a Document/Inspection of Record & Misc Services	1	1	1	1	1	1	1	1	1	1	1	1	1	1	1	1	1	1	1	1	20

ASR = Amritsar, BRN = Barnala, BTI = Bathinda, FDK = Faridkot, FGS = Fatehgarh, FZR = Ferozepur, GSR = Gurdaspur, HSR = Hoshiarpur, JAL = Jalandhar, KPT = Kapurthala, LDH = Ludhiana, MNS = Mansa, MGA = Moga, MHA = Mohali, MKT = Mukatsar, NSH = Nawan Shahar, PTL = Patiala, RPR = Roror, SGR = Sangrur, TT = Tarn Taran

Assessment of SUWIDHA Centres (District Level)

Sr. No.	Details	ASR	BRN	BTI	FDK	FGS	FZR	GSR	HSR	JAL	KPT	LDH	MNS	MGA	MHA	MKT	NSH	PTL	RPR	SGR	TT	Total
1.12	Issuance of Marriage Certificate	1	0	1	0	1	1	1	1	1	1	0	1	1	1	0	1	1	1	0	0	14
1.13	Issuance of ID-Card	0	0	0	0	0	0	0	1	0	1	0	1	0	0	1	1	0	0	0	0	5
1.14	Appointment of Namberdar	0	0	0	0	0	0	0	0	1	0	0	0	1	0	0	1	0	0	0	0	3
1.15	Driving License related Services	0	0	1	1	0	1	0	0	1	1	0	0	0	0	1	1	0	0	0	0	7
1.16	Registration of Vehicle related Services	0	0	1	1	0	1	0	0	0	1	0	0	0	0	1	1	0	0	0	0	6
1.17	Issuance of Birth Certificate	0	1	1	1	0	1	0	1	0	1	0	1	1	0	1	1	1	1	0	0	12
1.18	Issuance of Death Certificate	0	1	1	1	0	1	0	1	0	1	0	1	1	0	1	1	1	1	0	0	12
1.19	Issuance of Affidavits	1	0	1	1	1	1	1	1	1	1	1	1	1	1	1	1	1	1	0	1	18
1.2	Issuance of Permissions	1	0	0	1	1	1	0	0	0	0	1	0	0	1	0	1	0	1	0	0	8
1.21	Issuance of Indemnity Bonds	1	0	1	0	1	1	1	0	1	1	1	0	1	1	1	1	1	1	0	0	14
1.22	Issuance of Surety Bonds	1	0	1	0	1	1	1	1	1	1	1	0	1	1	1	1	1	1	0	0	15
1.23	Submission of Passport Applications	1	0	1	1	1	1	1	1	1	1	1	1	1	0	0	1	1	1	1	0	16
1.24	Issuances of No Objection Certificates	1	0	1	0	0	0	0	0	0	0	0	0	1	0	0	0	0	0	0	0	3
	Total Services offered	11	5	15	12	9	13	9	12	14	16	11	11	14	9	14	21	12	11	6	5	
	% of total services offered	46	21	62	50	37	54	37	50	58	67	46	46	58	37	58	87	50	46	25	21	

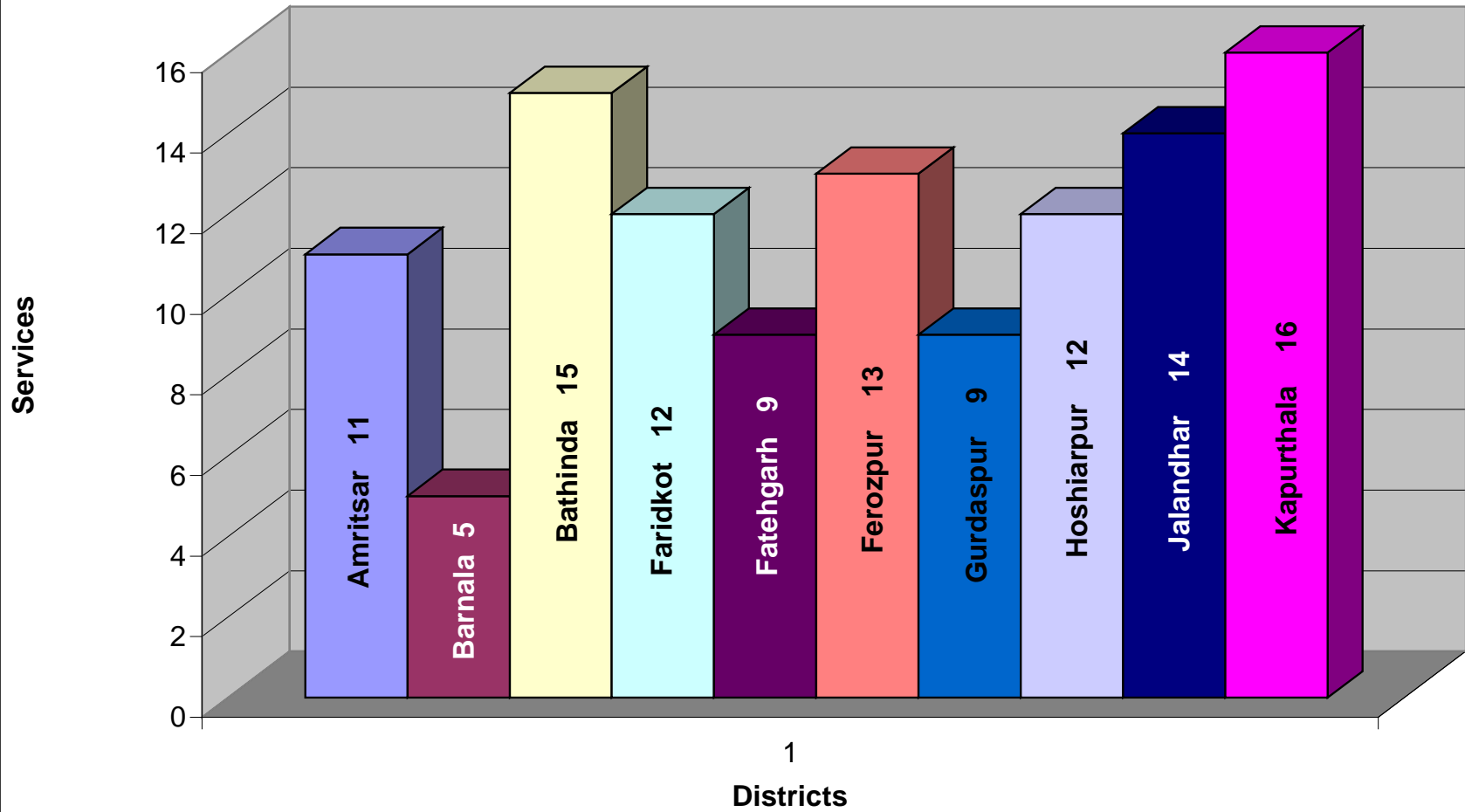
Assessment of SUWIDHA Centres (District Level)

Sr. No.	Details	ASR	BRN	BTI	FDK	FGS	FZR	GSR	HSR	JAL	KPT	LDH	MNS	MGA	MHA	MKT	NSH	PTL	RPR	SGR	TT	Total	
2.1	Marriage Registration	1	0	1	0	1	1	1	1	1	1	0	1	1	1	0	1	1	1	0	0	14	
2.2	Marriage ability Certificate Issuance System	1	0	1	0	0	0	1	1	1	1	0	0	1	0	0	0	1	0	1	0	9	
2.3	Counter Sign	1	1	1	1	1	1	1	1	1	1	1	1	1	1	1	1	1	1	1	1	20	
2.4	Affidavit Issuance System	1	0	1	1	1	1	1	1	1	1	1	1	1	1	1	1	1	1	1	0	1	18
2.5	Arms License Issuance System	1	1	1	1	1	1	1	1	1	1	1	1	1	1	1	1	1	1	1	1	20	
2.6	Certificate Issuance System	0	0	0	0	0	0	0	0	0	0	0	0	0	0	0	0	0	0	0	0	0	
2.7	Bus Passes Issuance System	0	0	0	1	0	0	0	0	0	1	1	1	0	0	1	1	1	0	0	0	6	
2.8	Copying Branch Information System	1	1	1	1	1	1	1	1	0	1	1	1	1	1	1	1	1	1	1	1	19	
2.9	Identity Card Issuance System	0	0	0	0	0	0	0	1	0	1	0	1	0	0	1	1	0	0	0	0	5	
2.10	Sarathi	0	0	1	1	0	1	0	0	1	1	0	0	0	0	1	1	0	0	0	0	7	
2.11	Vahan	0	0	1	1	0	1	0	0	0	1	0	0	0	0	1	1	0	0	0	0	6	
2.12	Handicap Certificate Issuance System	0	0	0	0	0	0	0	0	0	0	0	0	0	0	0	0	0	0	0	0	0	
2.13	Data Transfer System	0	0	0	0	0	0	0	0	0	0	0	0	0	0	0	0	0	0	0	0	0	
3.3	Dedicated Reception	1	0	1	0	0	1	0	1	1	1	0	0	1	1	1	1	1	1	0	1	13	
3.4	Centralized Delivery	1	1	1	1	0	1	1	1	1	1	0	1	1	1	1	1	1	1	1	1	18	
3.5	Selling of form & Checklist	0	1	1	0	0	1	0	1	1	1	0	1	0	0	1	1	1	0	1	1	12	
3.6	Computerized Token	1	1	0	0	1	0	0	0	1	1	0	1	0	1	0	0	1	0	1	0	9	

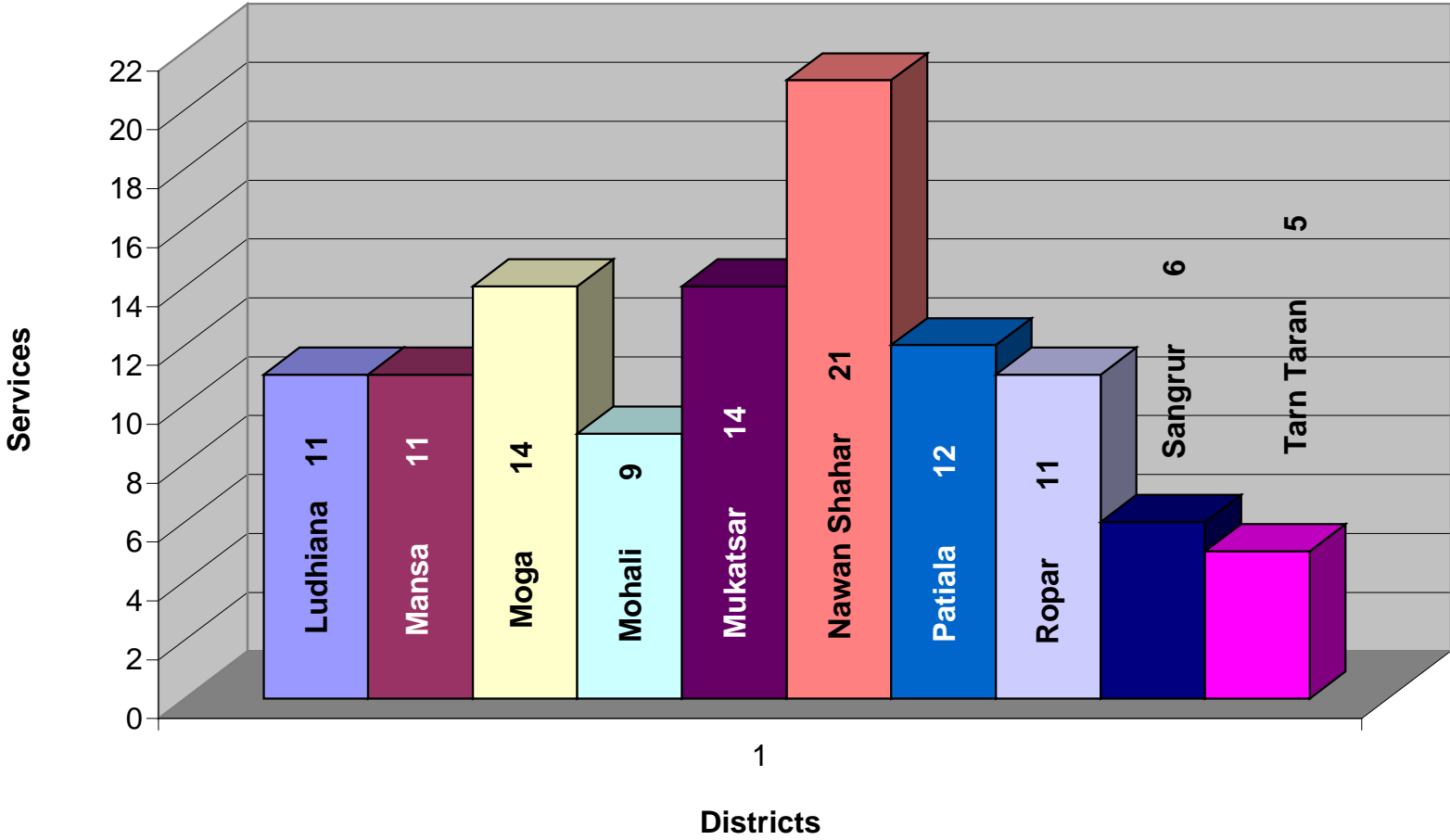
Assessment of SUWIDHA Centres (District Level)

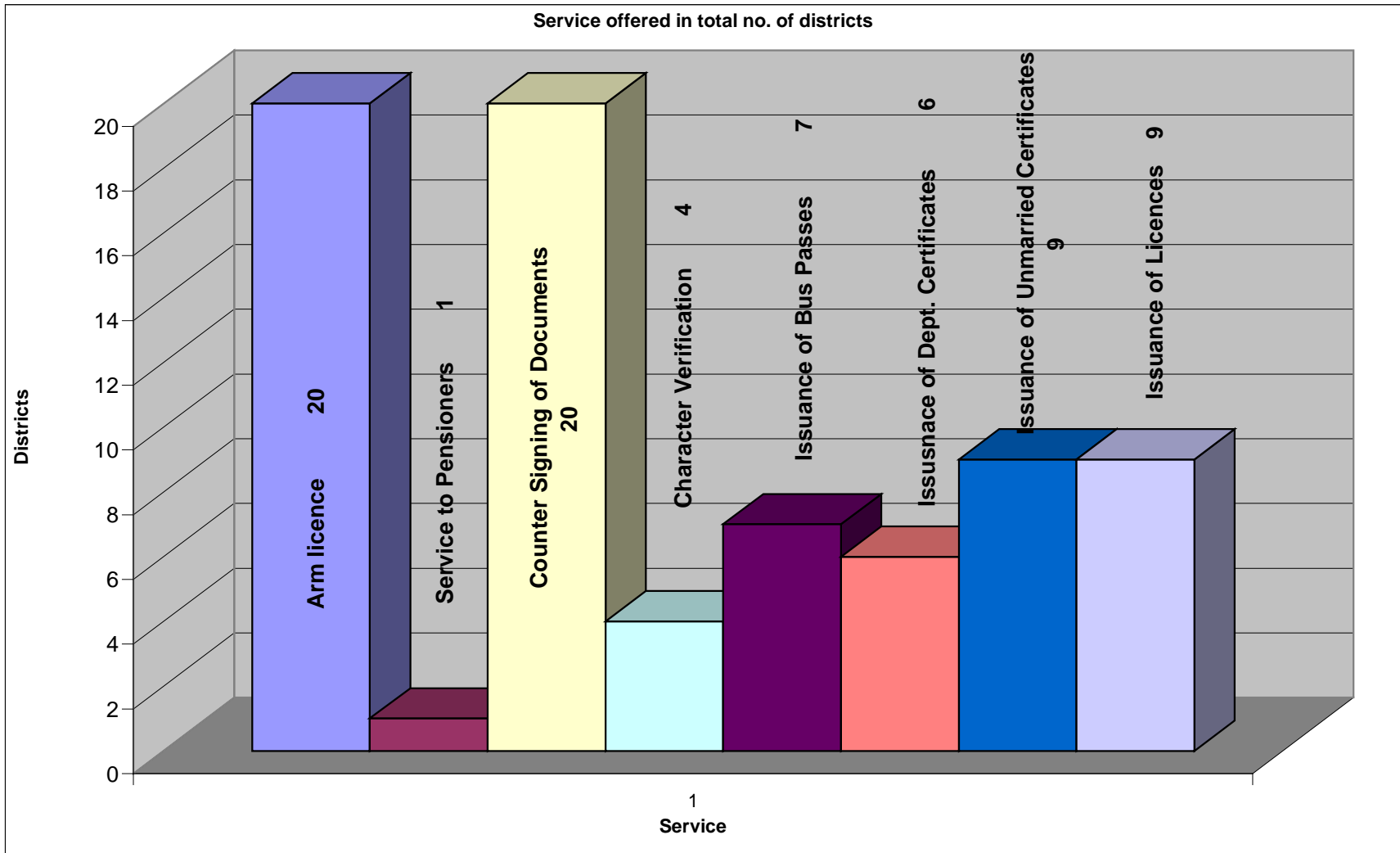
Sr. No.	Details	ASR	BRN	BTI	FDK	FGS	FZR	GSR	HSR	JAL	KPT	LDH	MNS	MGA	MHA	MKT	NSH	PTL	RPR	SGR	TT	Total
3.7	Filling up of Form	0	0	1	0	0	1	0	1	0	1	0	1	1	1	1	1	1	0	0	1	11
3.8	Digital Display of Token	1	0	1	0	0	1	0	1	1	1	0	1	1	1	1	1	1	1	0	0	13
7.1	Call to intimate completion of status	1	1	0	0	0	1	1	1	1	1	0	0	0	1	1	0	1	1	0	0	11
7.2	SMS Service	1	0	1	1	0	1	1	1	1	1	1	1	0	1	1	1	1	1	1	0	16
7.3	Courier Service for delivery of the services	1	0	0	1	0	0	0	0	0	1	0	0	0	0	0	1	0	1	0	0	5
	Total	10	6	13	8	6	12	7	12	11	16	5	12	10	10	13	14	13	8	7	8	
3.1	Total Counter	15	9	27	11	15	19	7	13	33	23	40	11	18	6	15	33	26	14	8	4	347
3.2	Operational	12	7	26	7	8	14	5	13	27	23	20	6	8	6	14	29	26	8	6	3	268
ASR = Amritsar, BRN = Barnala, BTI = Bathinda, FDK = Faridkot, FGS = Fatehgarh, FZR = Ferozepur, GSR = Gurdaspur, HSR = Hoshiarpur, JAL = Jalandhar, KPT = Kapurthala, LDH = Ludhiana, MNS = Mansa, MGA = Moga, MHA = Mohali, MKT = Mukatsar, NSH = Nawan Shahar, PTL = Patiala, RPR = Rorar, SGR = Sangrur, TT = Tarn Taran																						

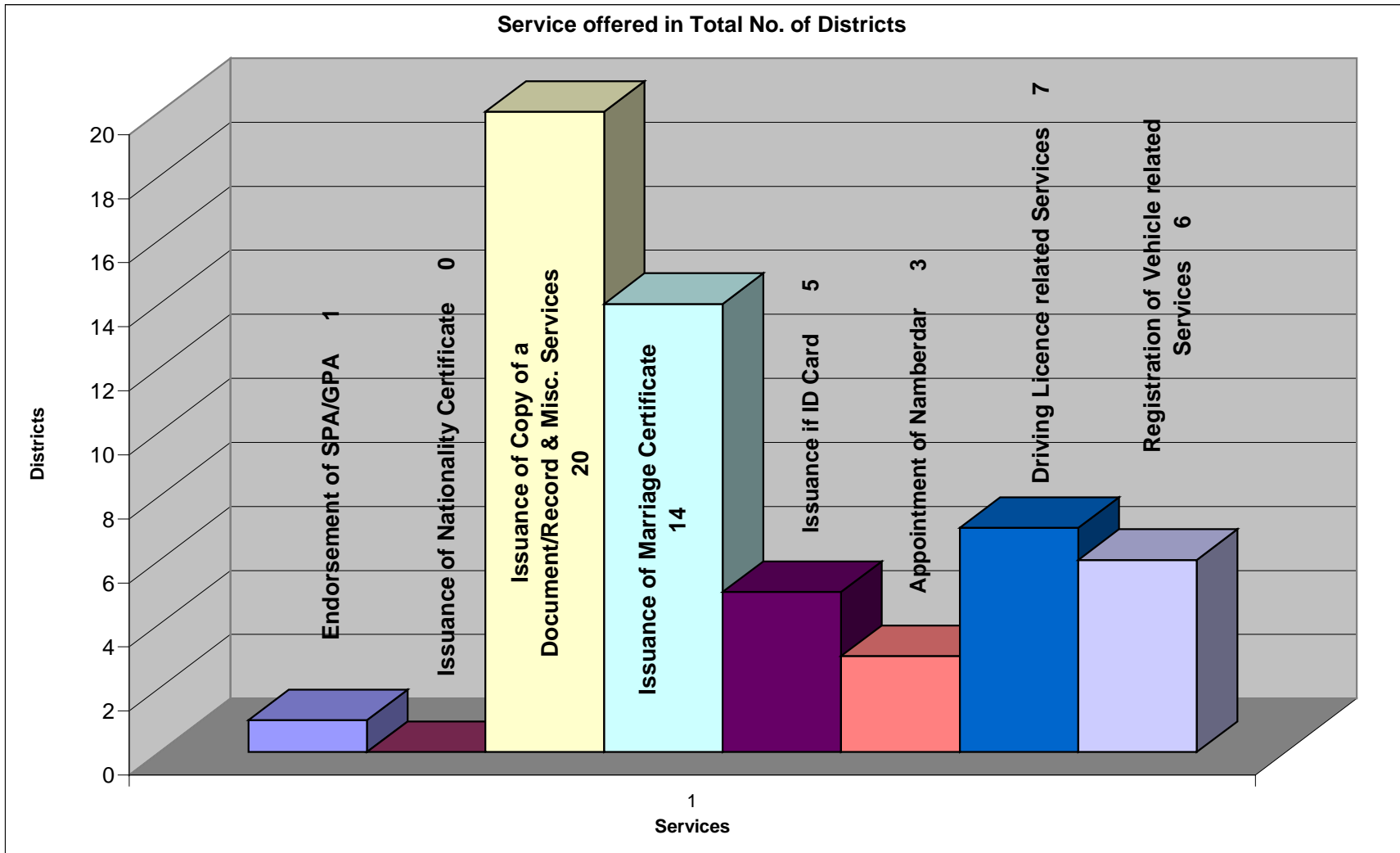
No. of services offered in District Headquarters

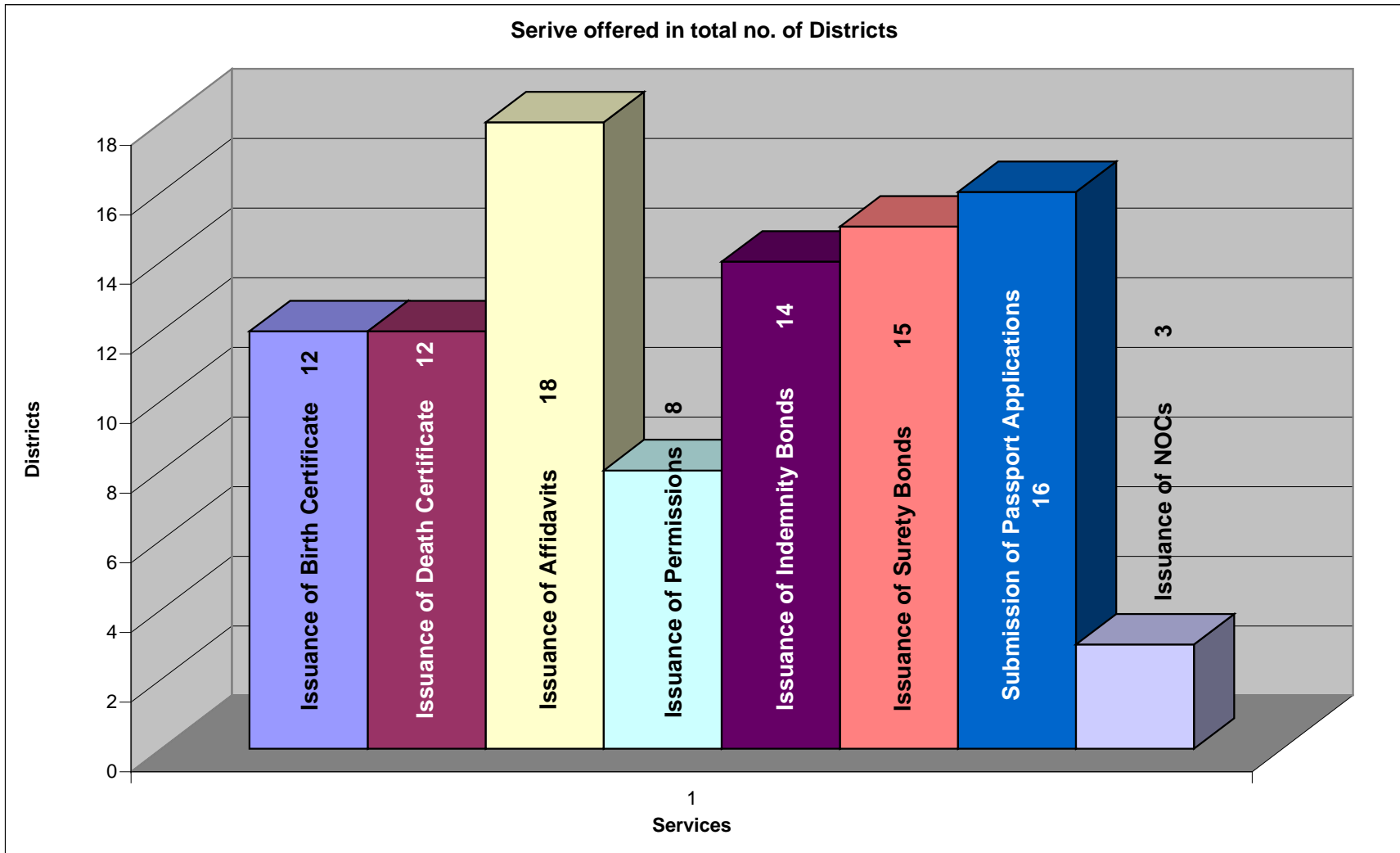


No. of Services offered in Districts

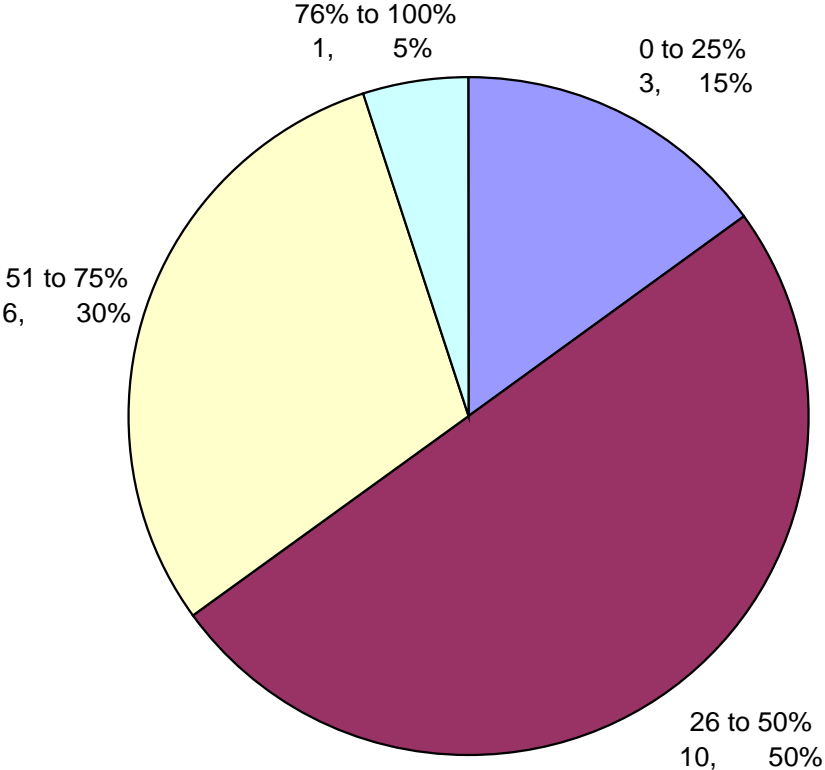


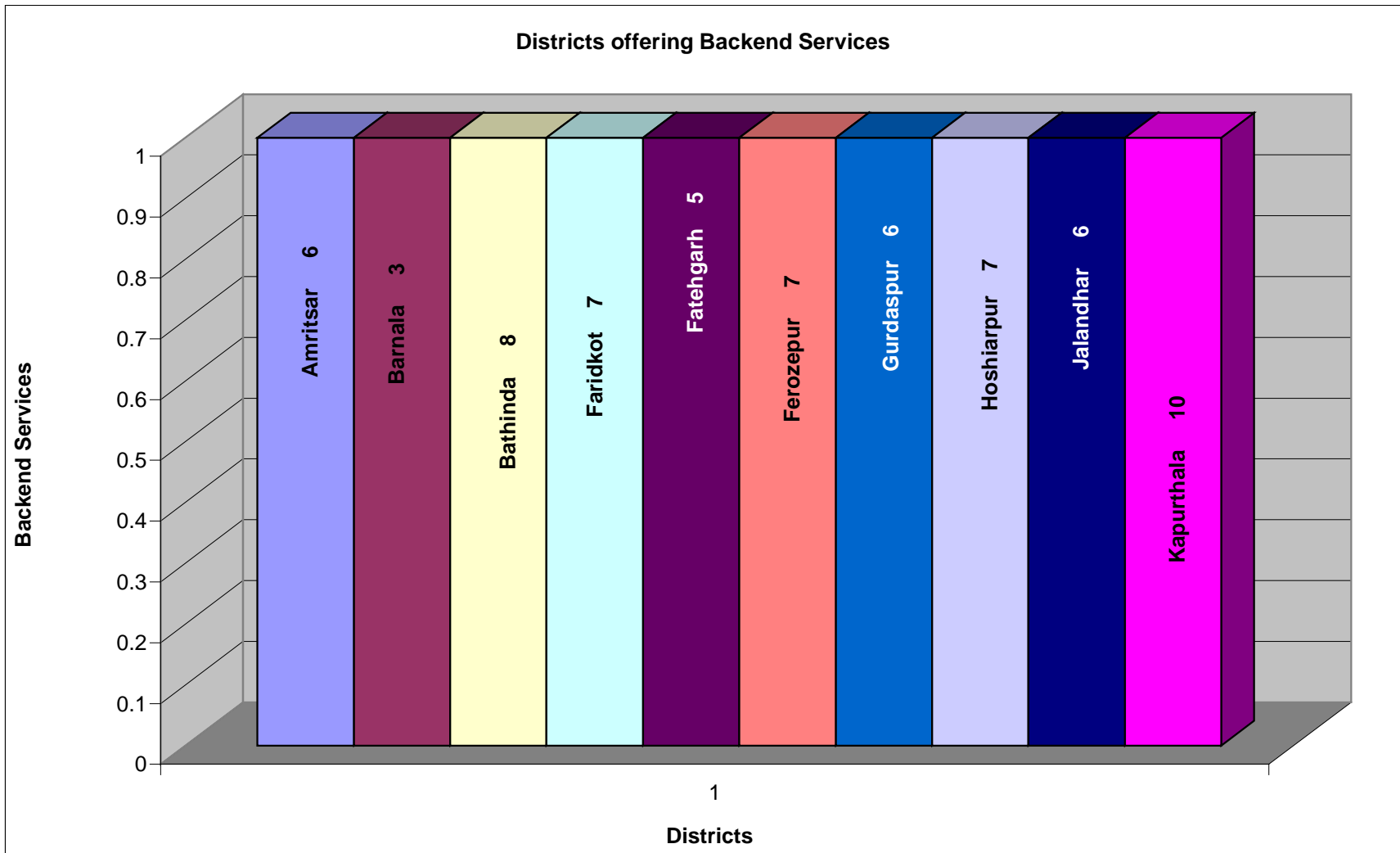


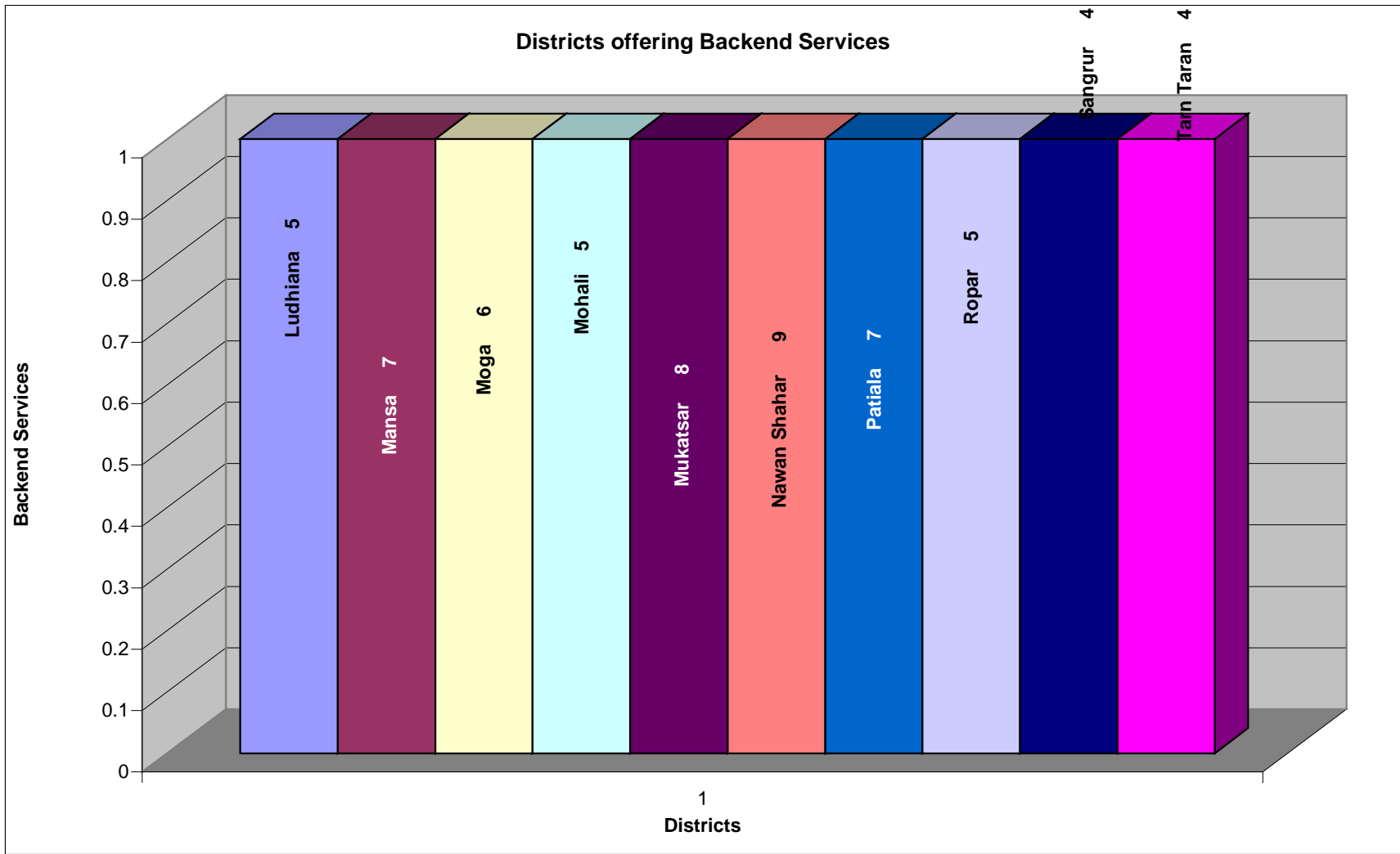




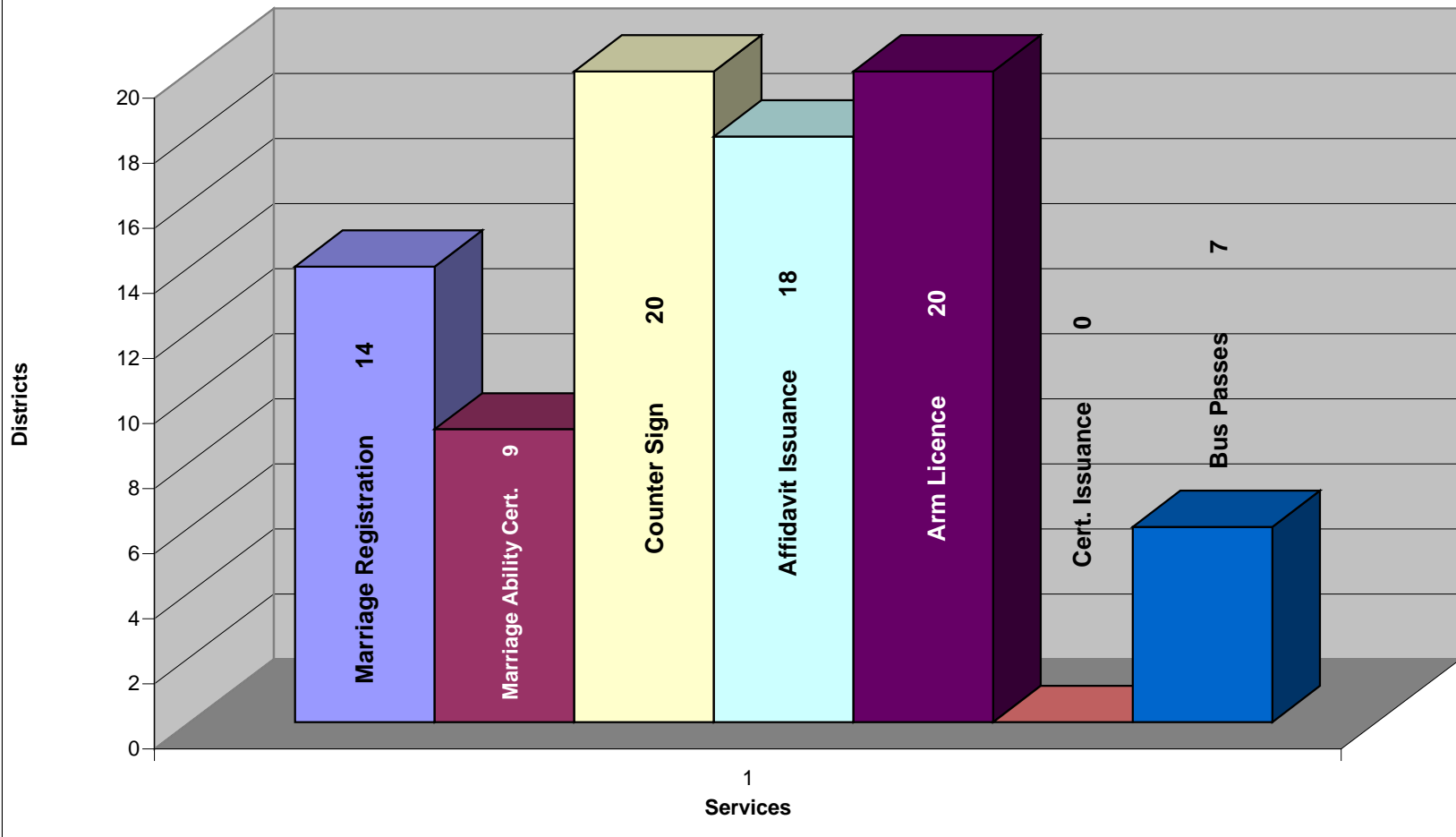
No. of districts offer %age of services



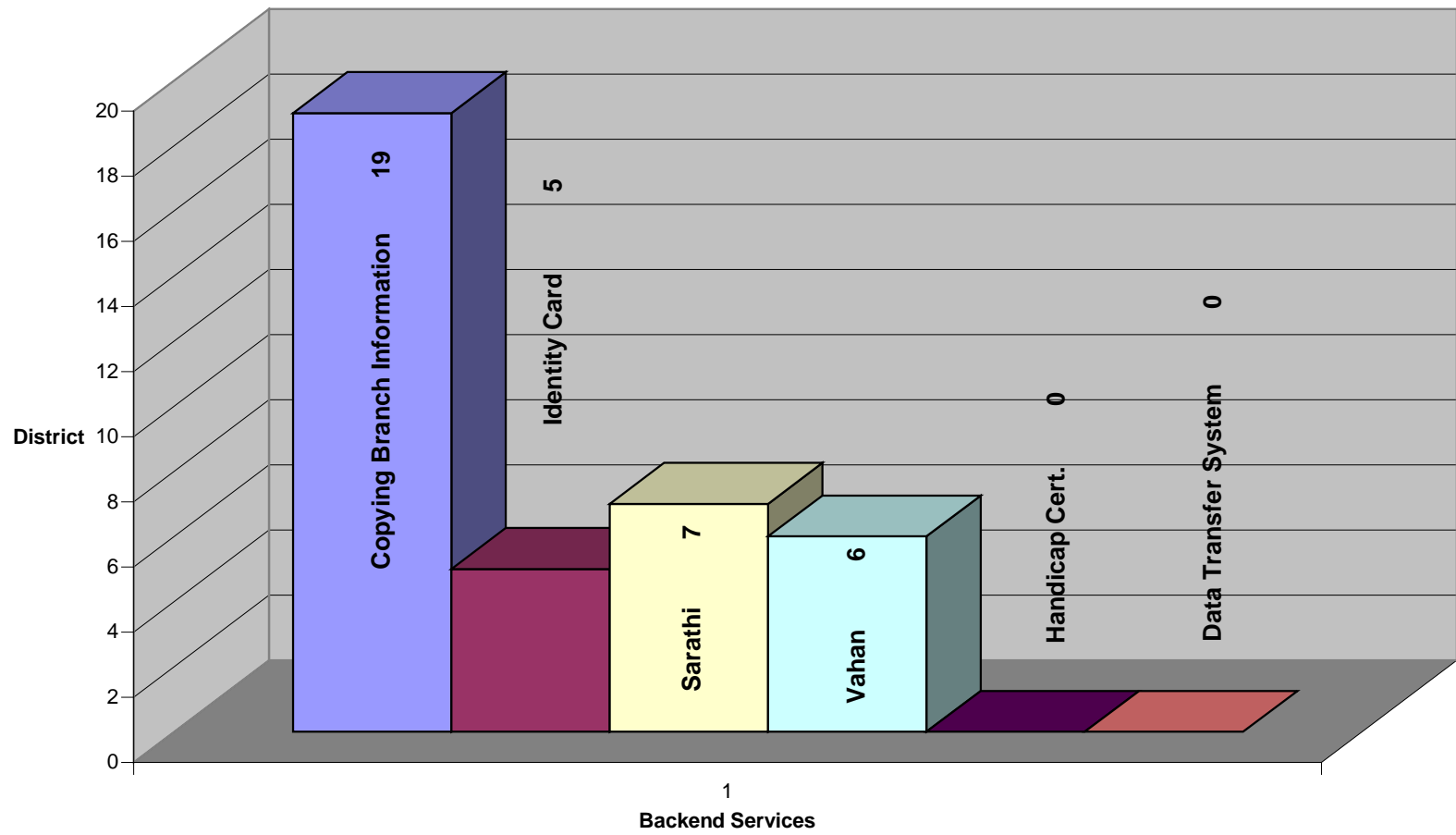




Backend Services offered in total Districts



Backend Services offered in Districts



Administration Services offered in Districts

